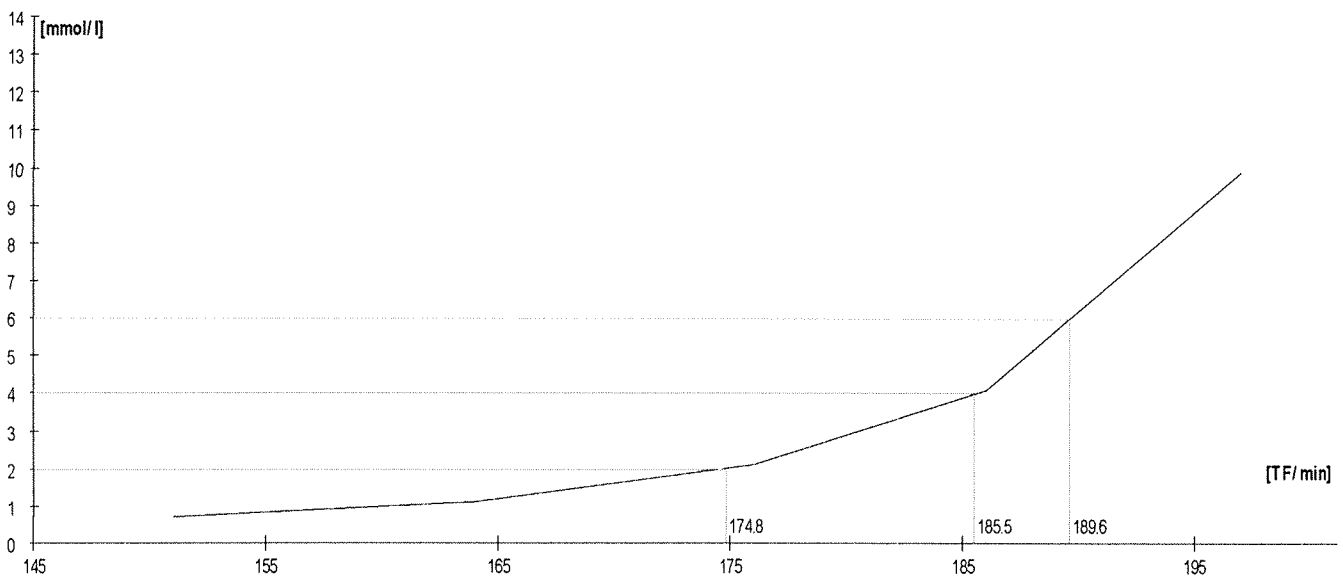
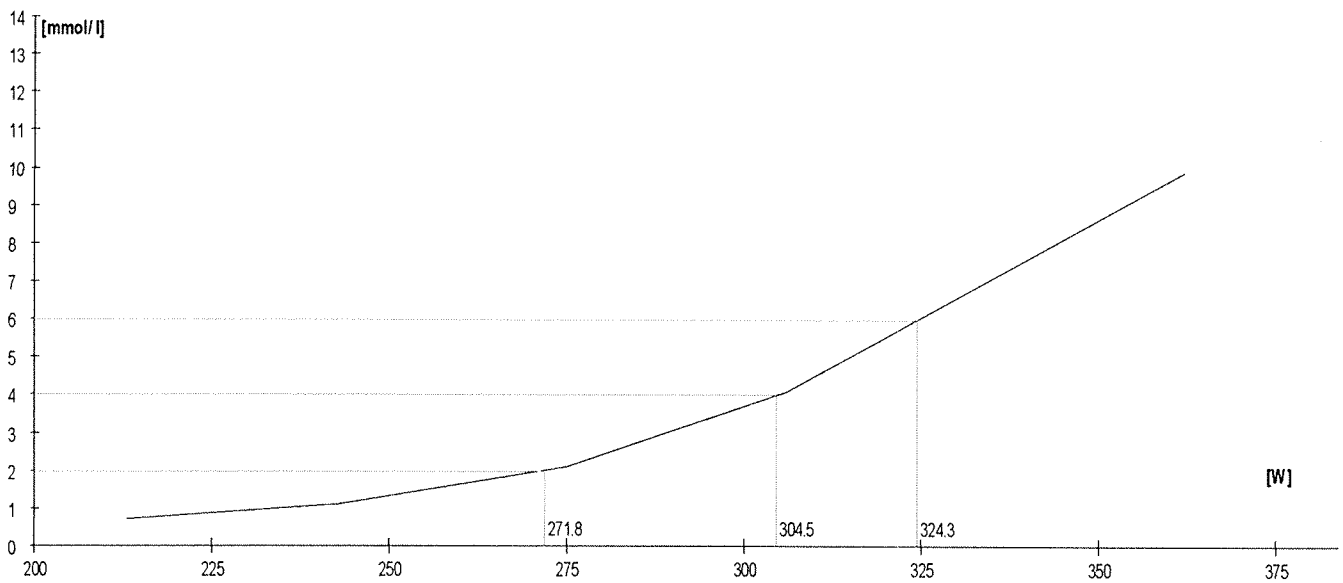
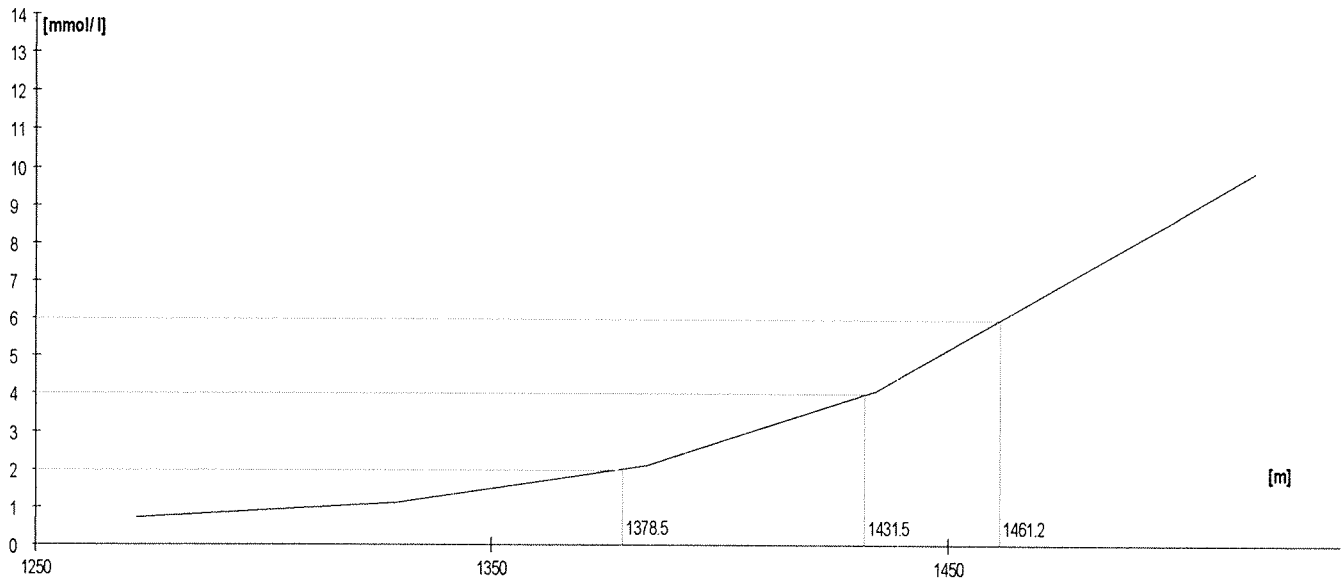


**VESLOVÁNÍ PRAHY - JUNIOŘI - OLMOUC - 19. října 2013**

JMÉNO	WATY	PRAHY
KLUKA	362,0	319,4
SOLAŘ	337,0	267,0
SVÍZELA	352,0	267,2
KINDLER	306,0	247,3
RAMPULA	303,0	268,3
SEDLÁČEK	309,0	246,0
SVOBODA	338,0	273,0
HAVLÍČEK	379,0	321,2
HRSTKA	362,0	304,5
ATARSIA A.	312,0	272,1
ATARSIA J.	310,0	258,8
VÁŘKOVÁ	309,0	237,5
JUŽIKOVÁ	218,0	179,2
LÁHNEROVÁ	242,0	219,4
SOLAŘOVÁ	230,0	177,1
FLAMÍNKOVÁ	242,0	198,0
NOVOTNÍKOVÁ	252,0	212,0
KREJČOVÁ	226,0	187,6

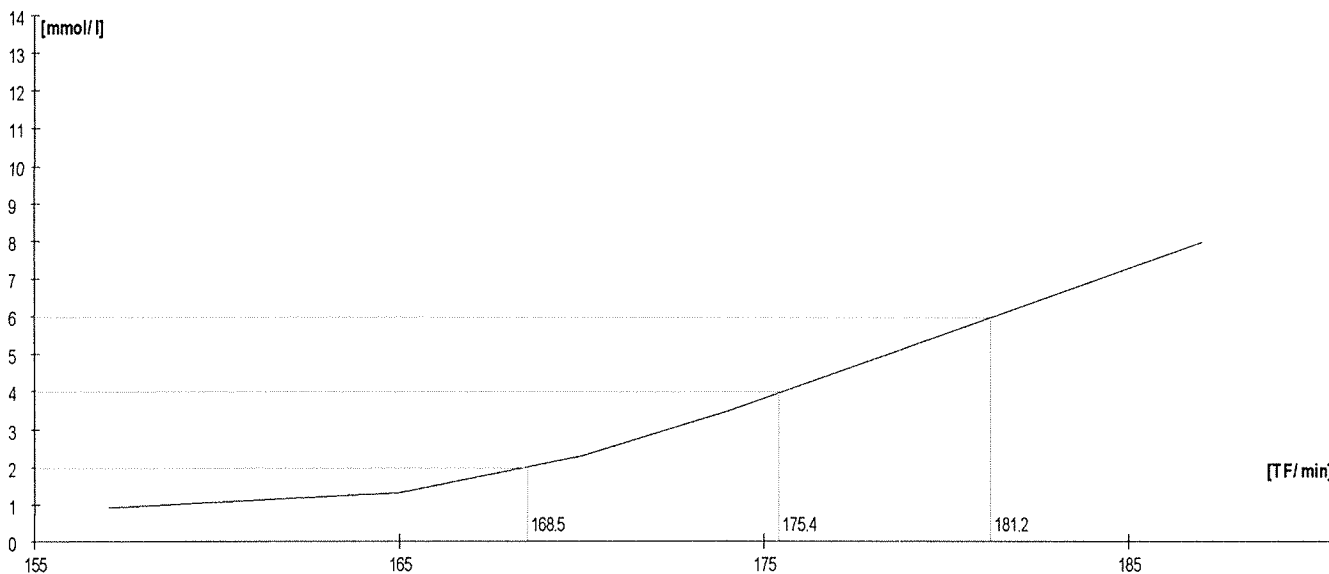
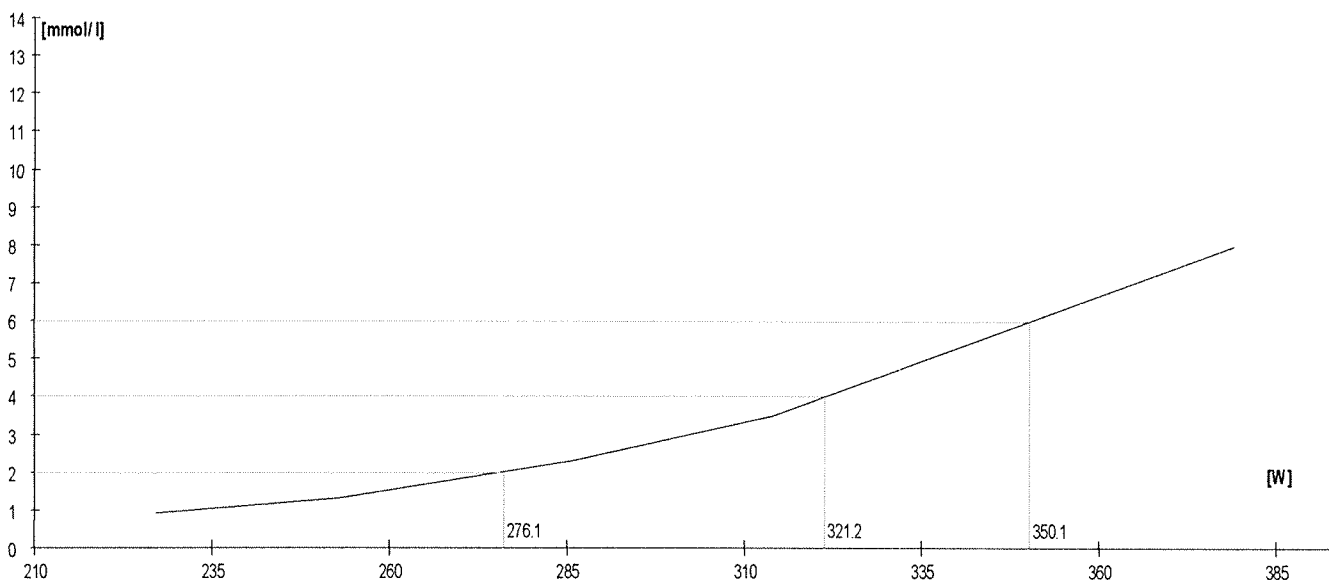
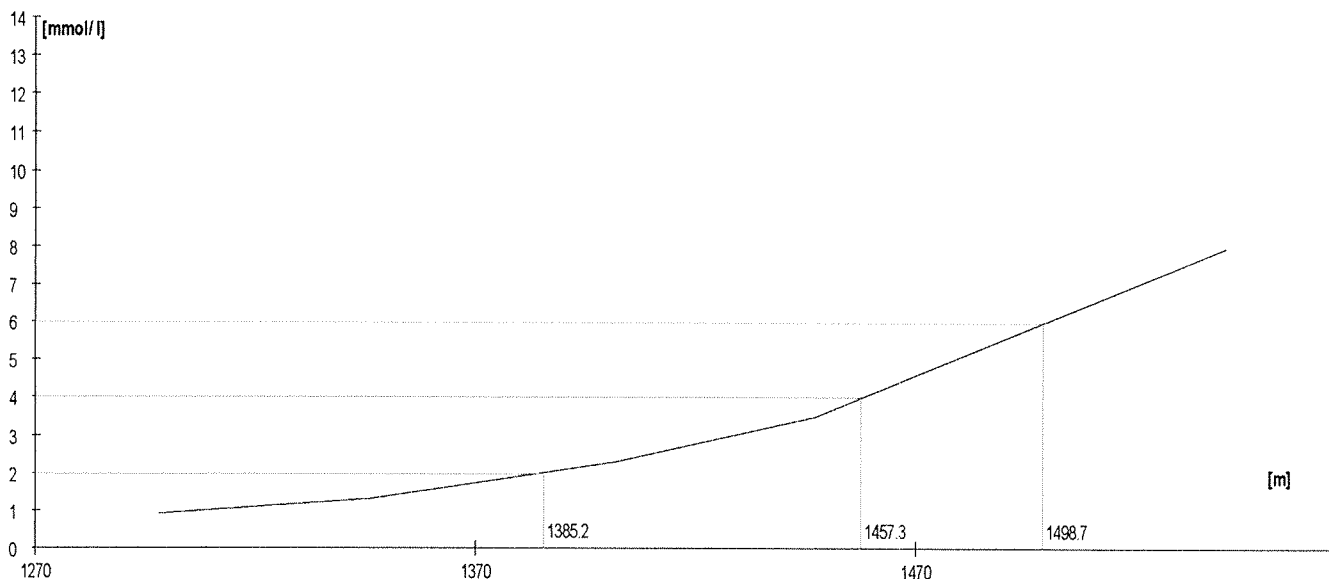
	Rozm.[W]	Vykon [m]	W	TF/min	Lakt.
1.	210	1272	213	151	0,7
2.	240	1329	243	164	1,1
3.	270	1384	275	176	2,1
4.	300	1434	306	186	4,1
5.	max	1517	362	197	9,9

Lakt.	TF/min	W
2.0	174.8	271.8
3.0		
4.0	186.6	304.5
5.0		
6.0	189.6	324.3
7.0		
8.0		



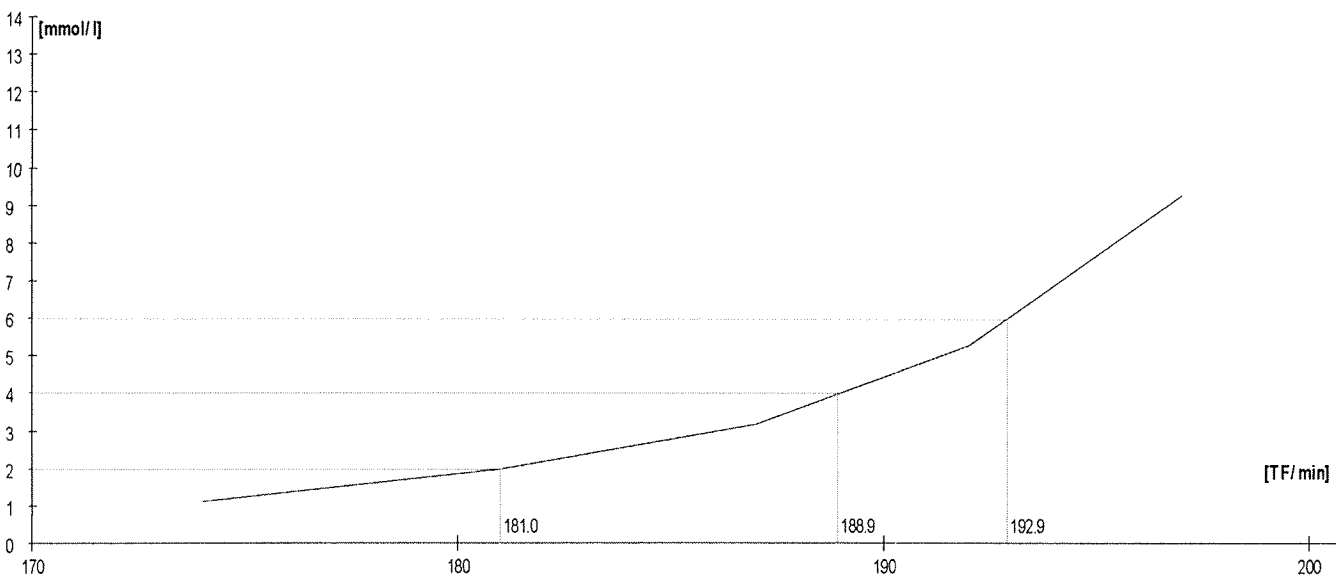
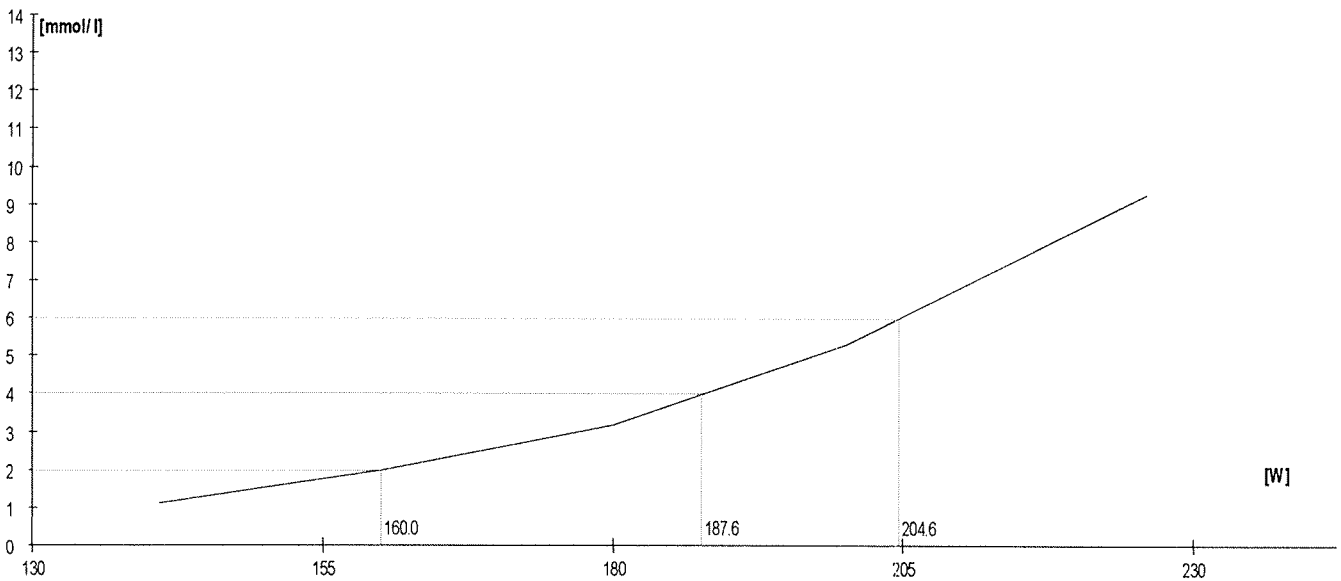
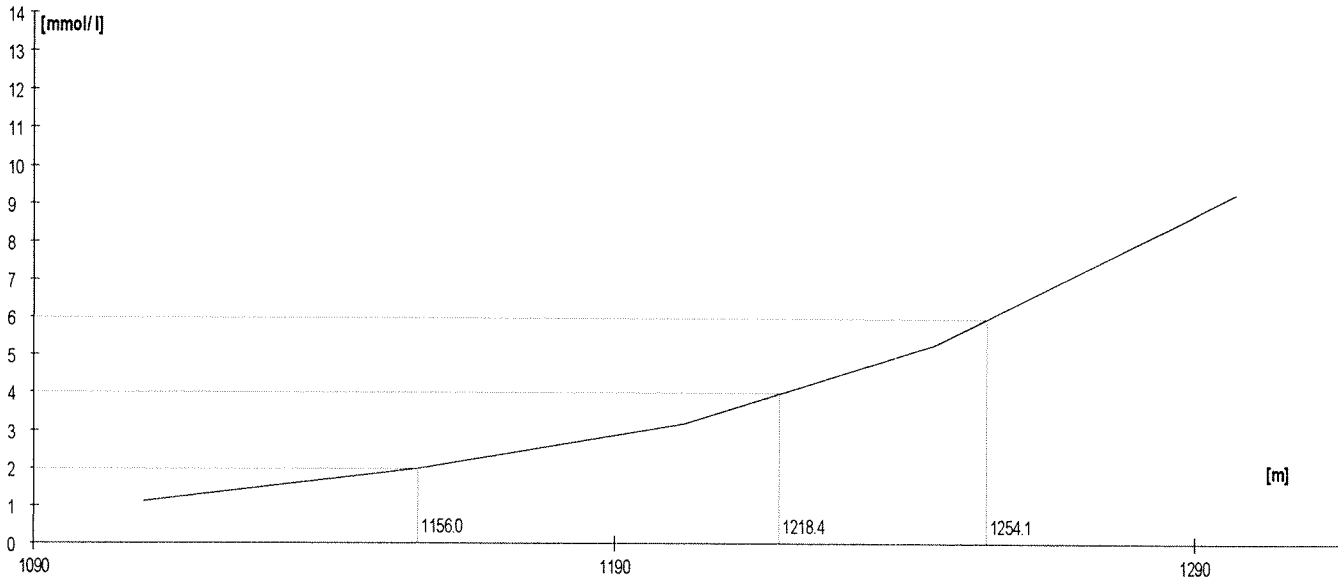
	Rozm. [W]	Výkon [m]	W	TF/min	Lakt.
1.	220	1298	227	157	0,9
2.	250	1346	253	165	1,3
3.	280	1402	286	170	2,3
4.	310	1447	314	174	3,5
5.	max	1540	379	187	8,0

Lakt.	TF/min	W
2.0	168.6	276.1
3.0		
4.0	175.4	321.2
5.0		
6.0	181.2	350.1
7.0		
8.0		



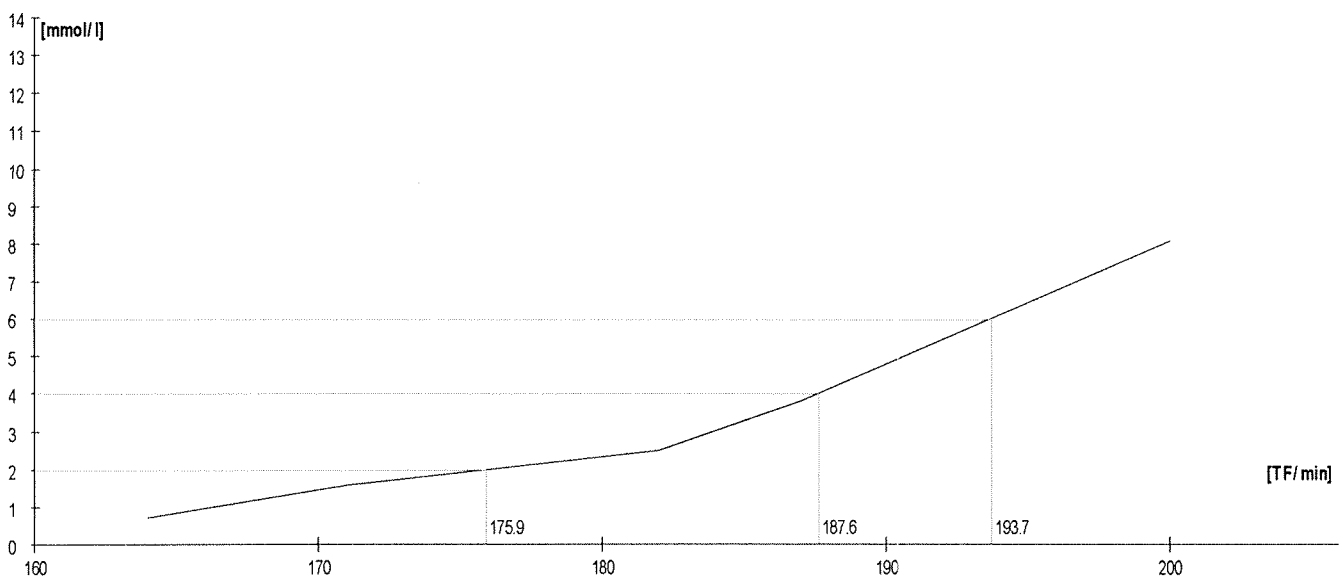
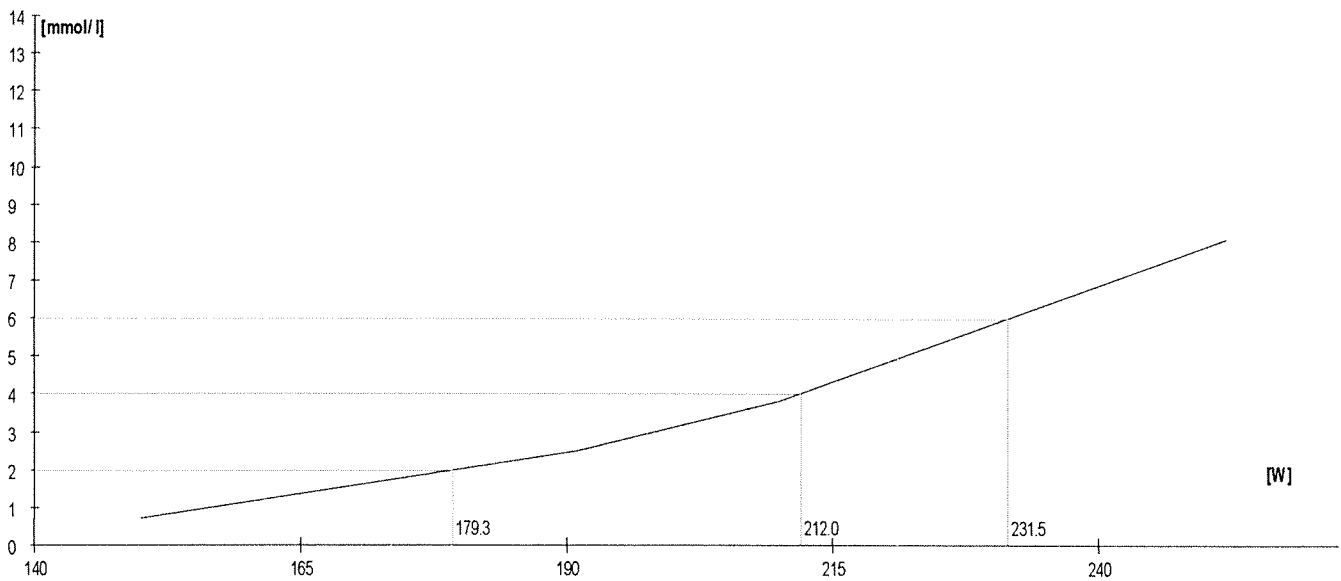
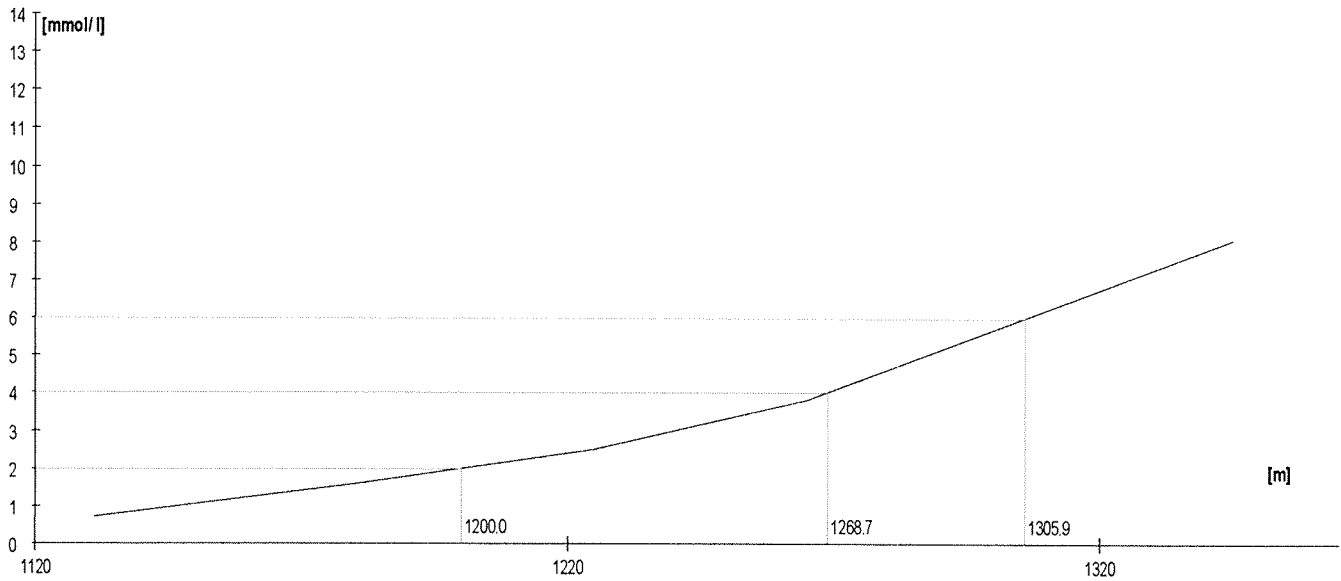
	Rozm.[W]	Výkon [m]	W	TF/min	Lakt.
1.	140	1109	141	174	1,1
2.	16	1156	160	181	2,0
3.	180	1202	180	187	3,2
4.	200	1245	200	192	5,3
5.	max	1297	226	197	9,3

Lakt.	TF/min	W
2.0	181.0	160.0
3.0		
4.0	188.9	187.6
5.0		
6.0	192.9	204.6
7.0		
8.0		



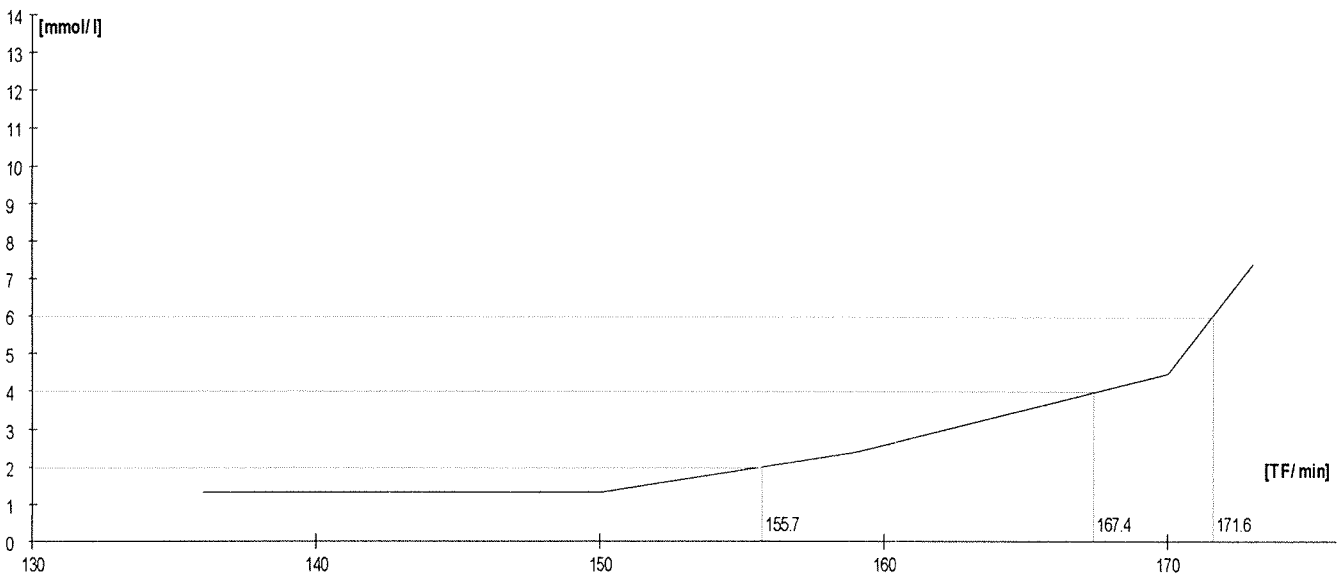
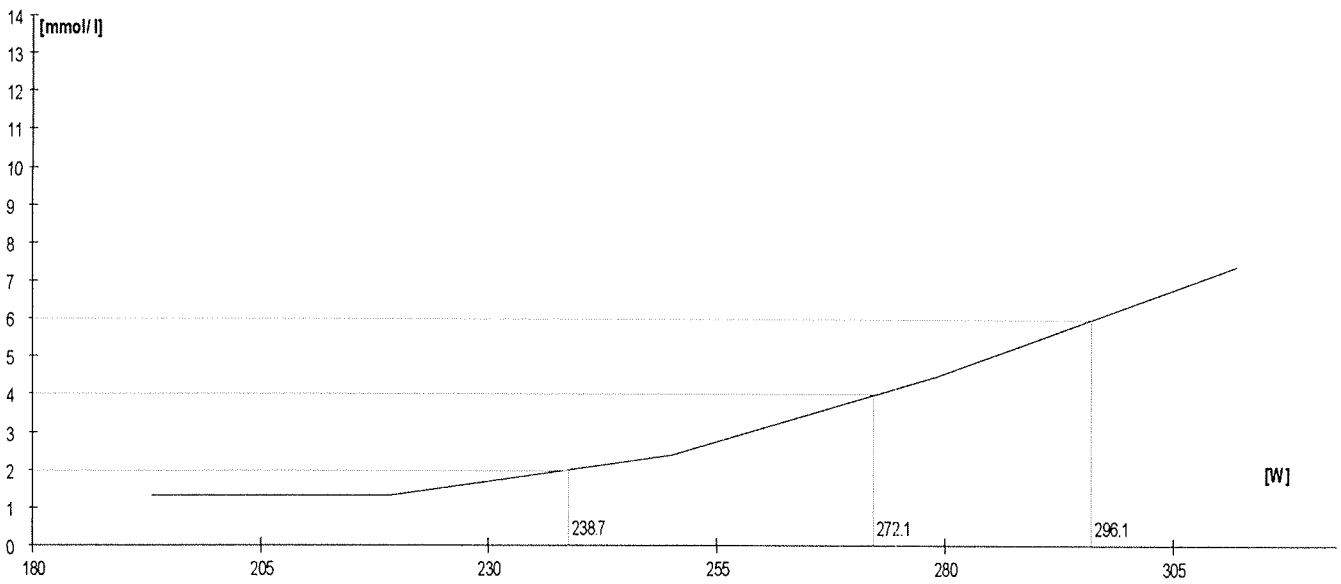
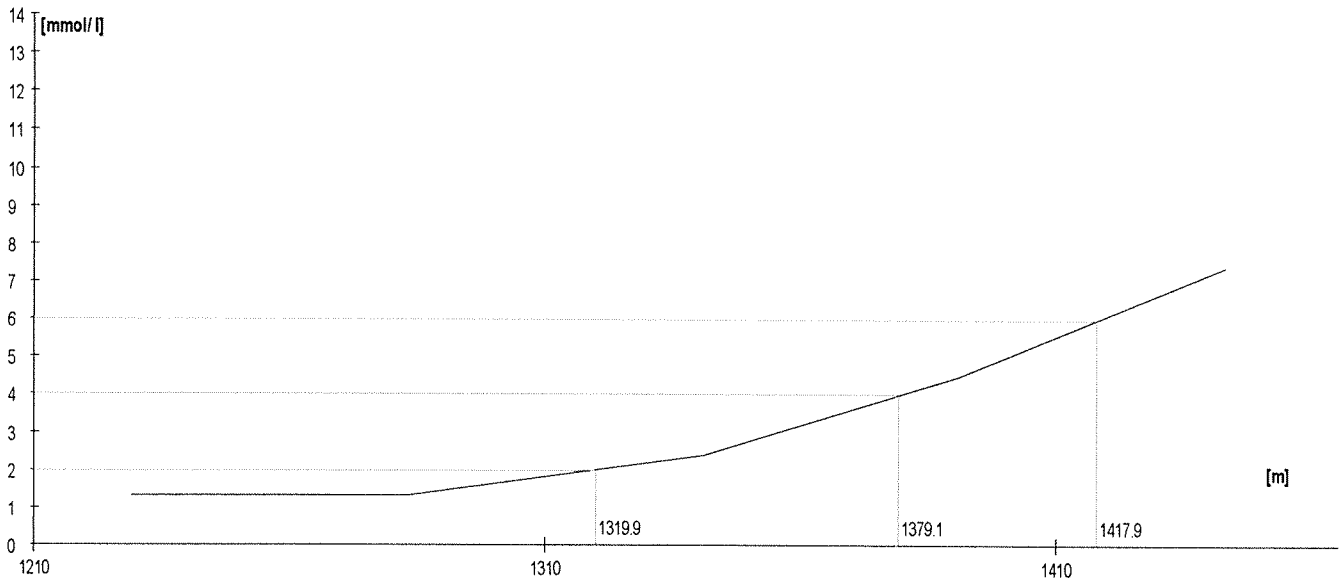
	Rozm. [W]	Výkon [m]	W	TF/min	Lakt.
1.	150	1131	150	164	0,7
2.	170	1180	170	171	1,6
3.	190	1225	191	182	2,5
4.	210	1265	210	187	3,8
5.	max	1345	252	200	8,1

Lakt.	TF/min	W
2.0	175.9	179.3
3.0		
4.0	187.6	212.0
5.0		
6.0	193.7	231.5
7.0		
8.0		



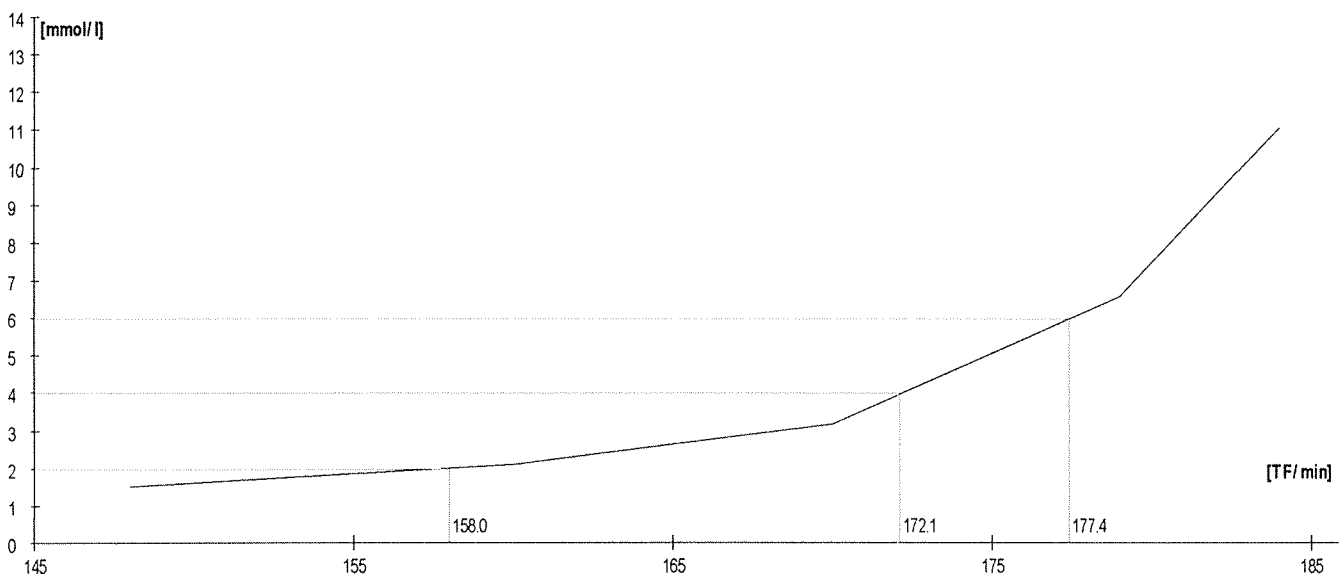
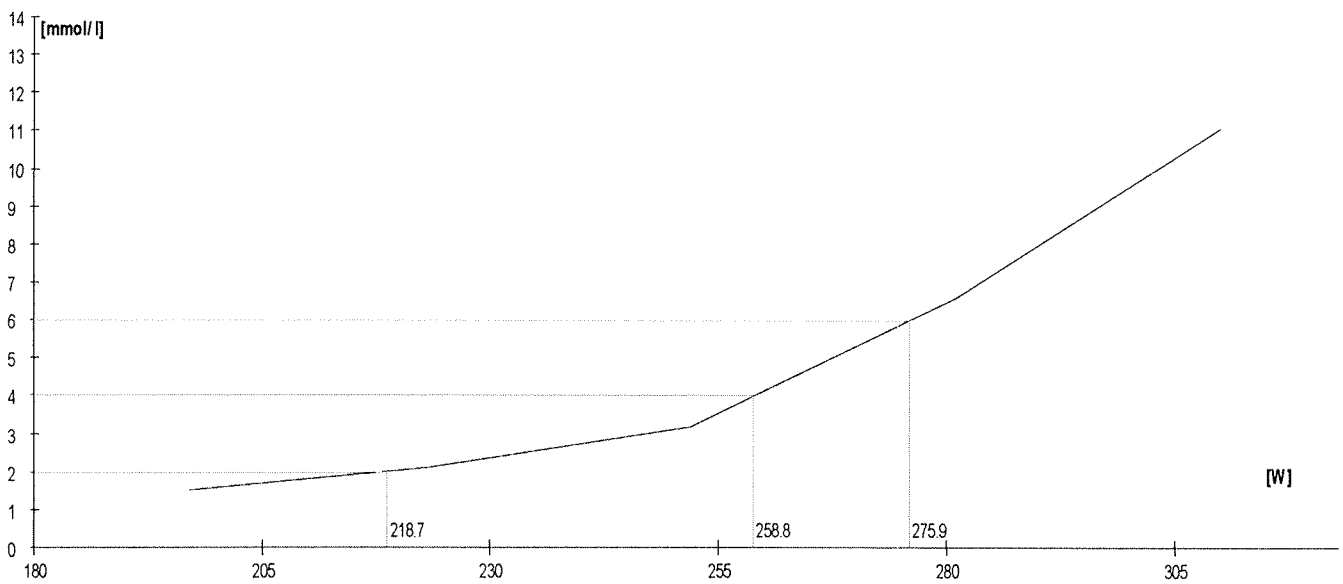
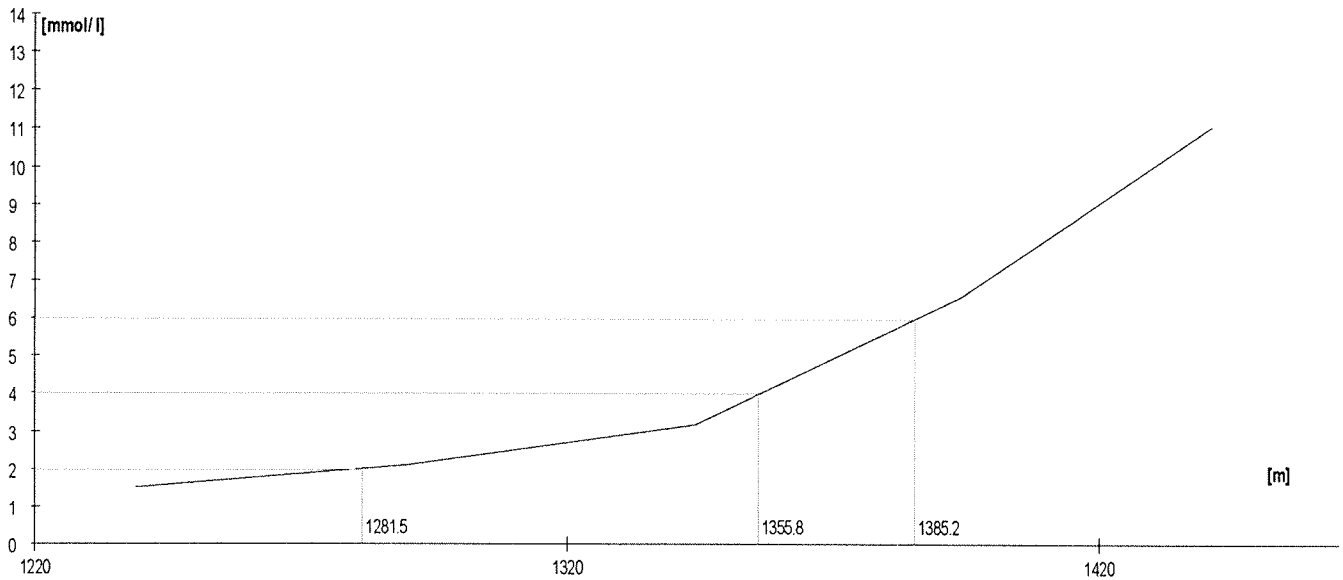
	Rozm.[W]	Vykon [m]	W	TF/min	Lakt.
1.	190	1229	193	136	1,3
2.	220	1283	219	150	1,3
3.	250	1341	250	159	2,4
4.	280	1391	279	170	4,5
5.	310	1443	312	173	7,4

Lakt.	TF/min	W
2.0	155.7	238.7
3.0		
4.0	167.4	272.1
5.0		
6.0	171.6	296.1
7.0		
8.0		



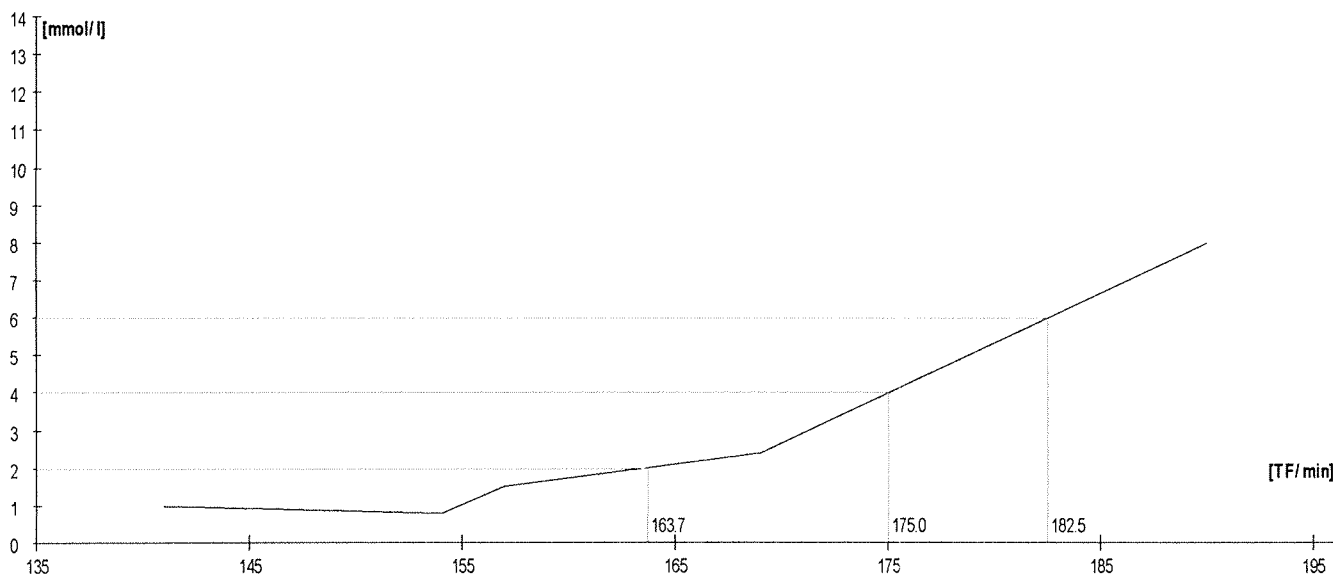
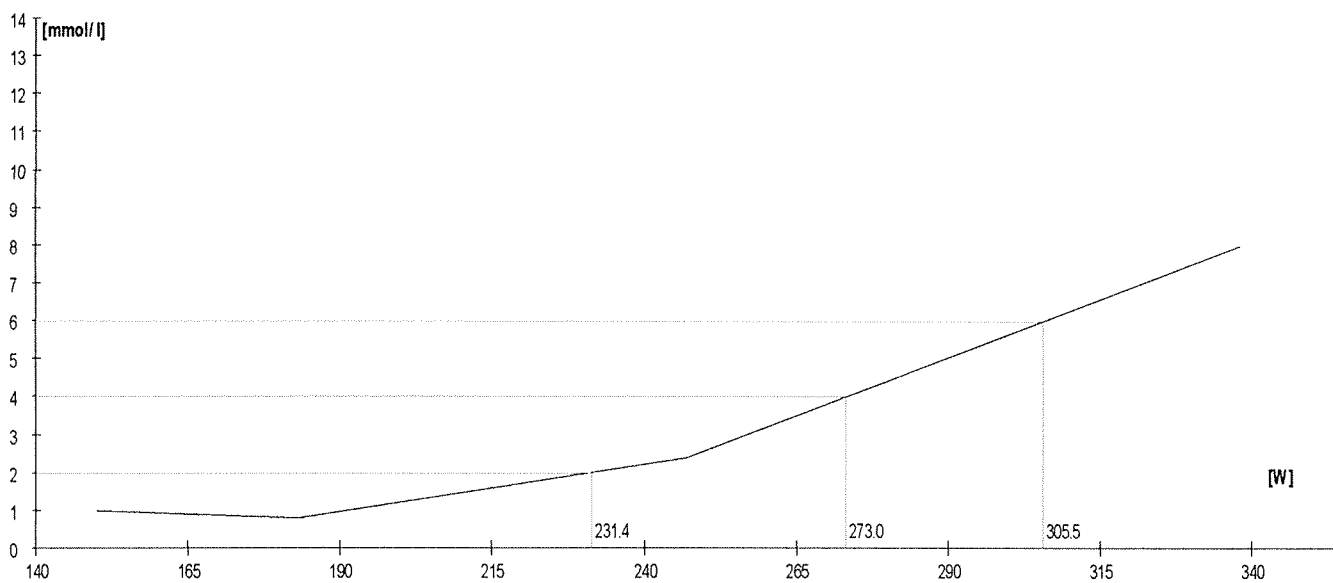
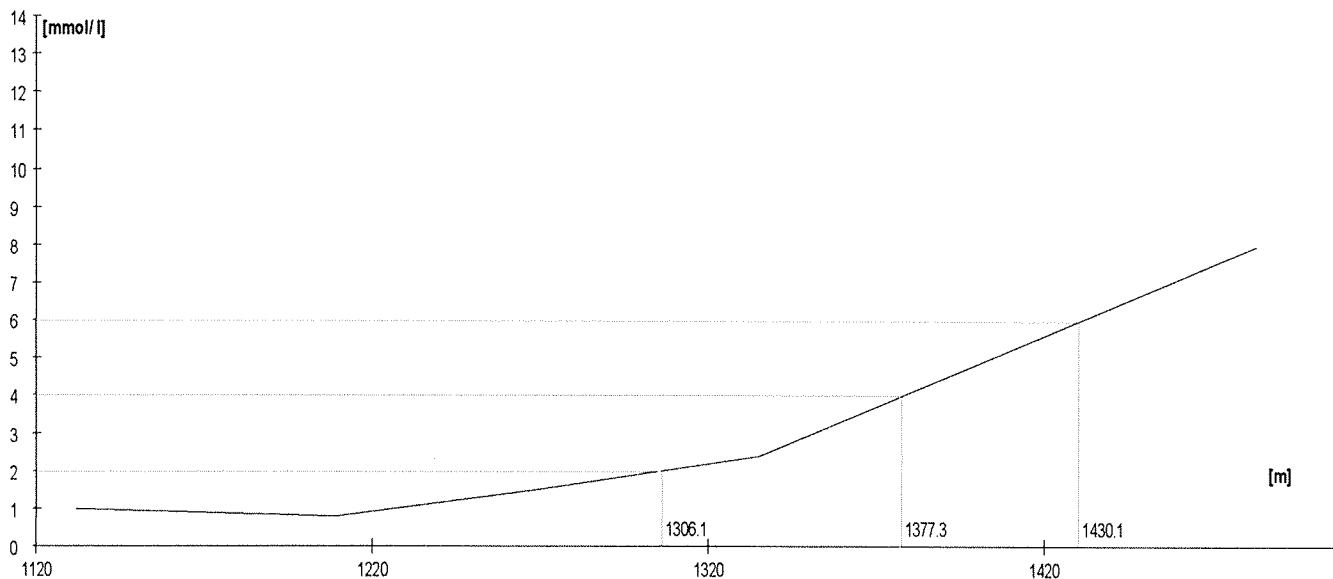
	Rozm. [W]	Výkon [m]	W	TF/min	Lakt.
1.	190	1239	197	148	1,5
2.	220	1290	223	160	2,1
3.	250	1344	252	170	3,2
4.	280	1394	281	179	6,6
5.	310	1441	310	184	11,1

Lakt.	TF/min	W
2.0	158.0	218.7
3.0		
4.0	172.1	258.8
5.0		
6.0	177.4	275.9
7.0		
8.0		



	Rozm. [W]	Výkon [m]	W	TF/min	Lakt.
1.	150	1132	150	141	1,0
2.	180	1209	183	154	0,8
3.	210	1270	212	157	1,5
4.	240	1335	247	169	2,4
5.	max	1483	338	190	8,0

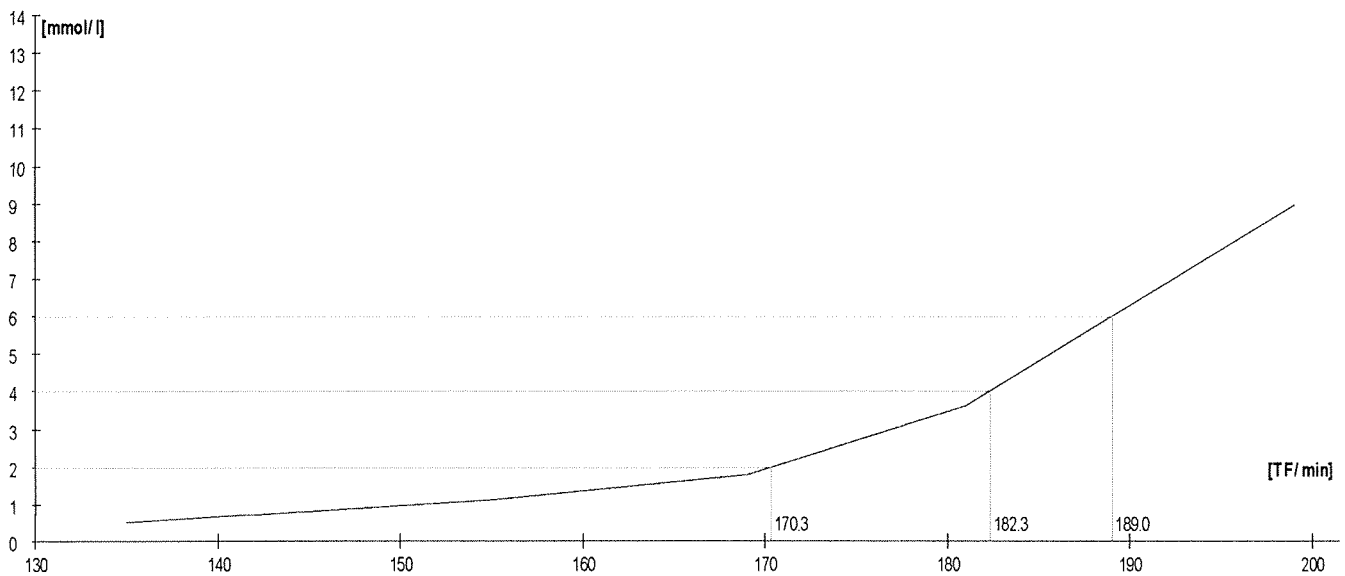
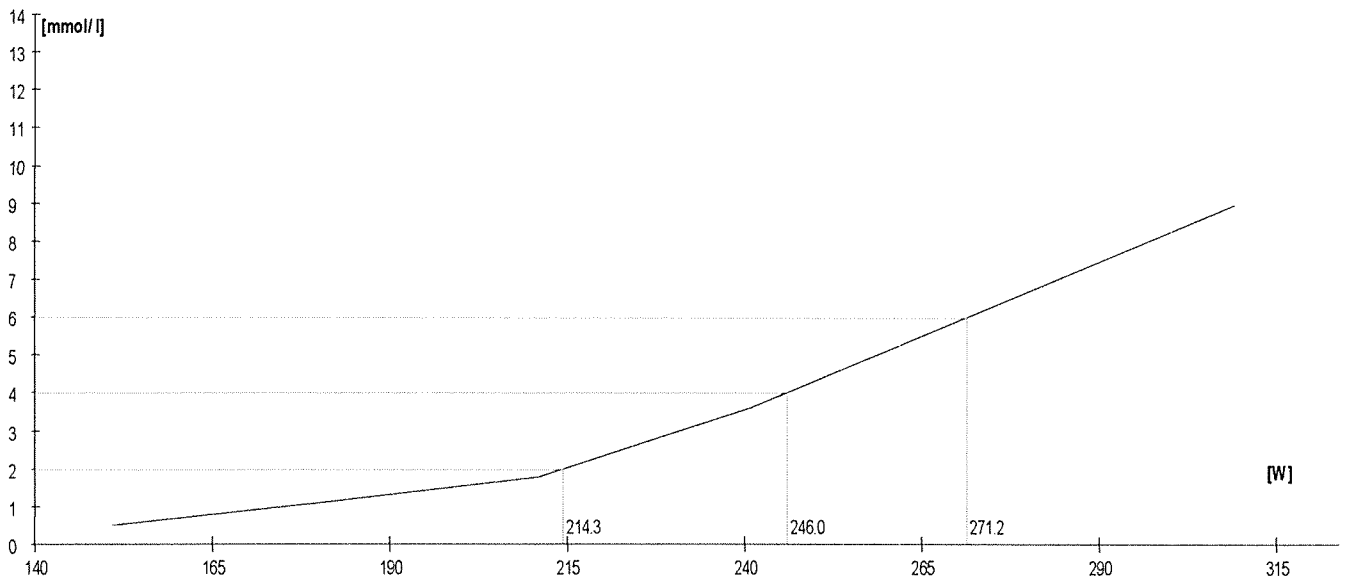
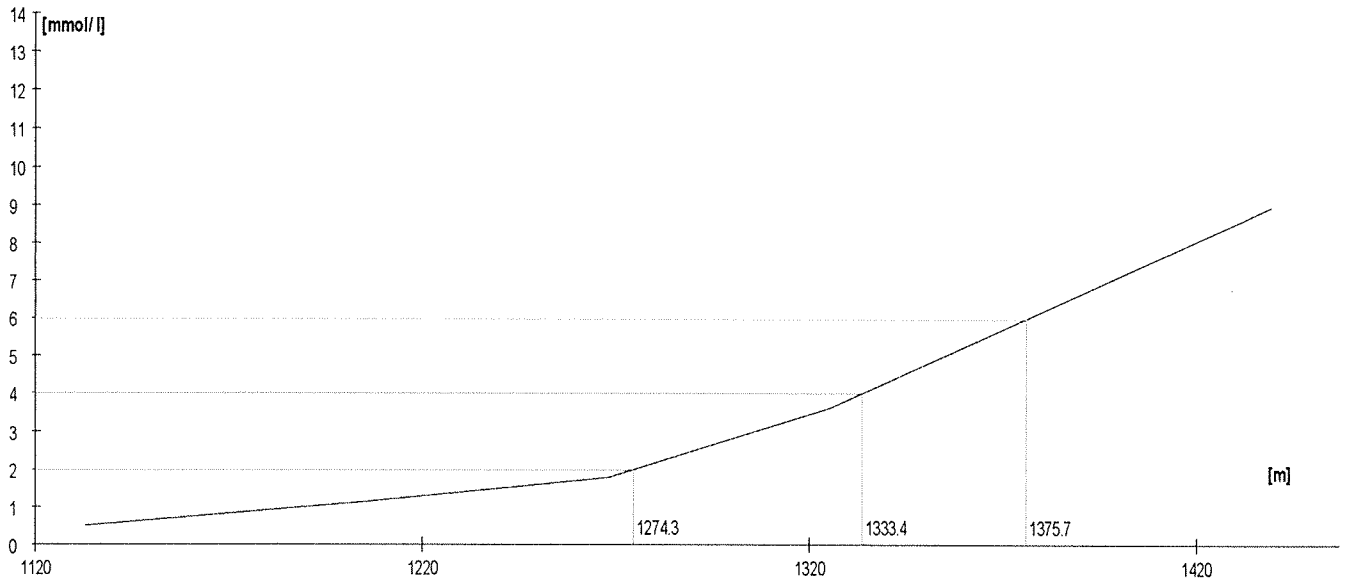
Lakt.	TF/min	W
2.0	163.7	231.4
3.0		
4.0	176.0	273.0
5.0		
6.0	182.5	306.5
7.0		
8.0		





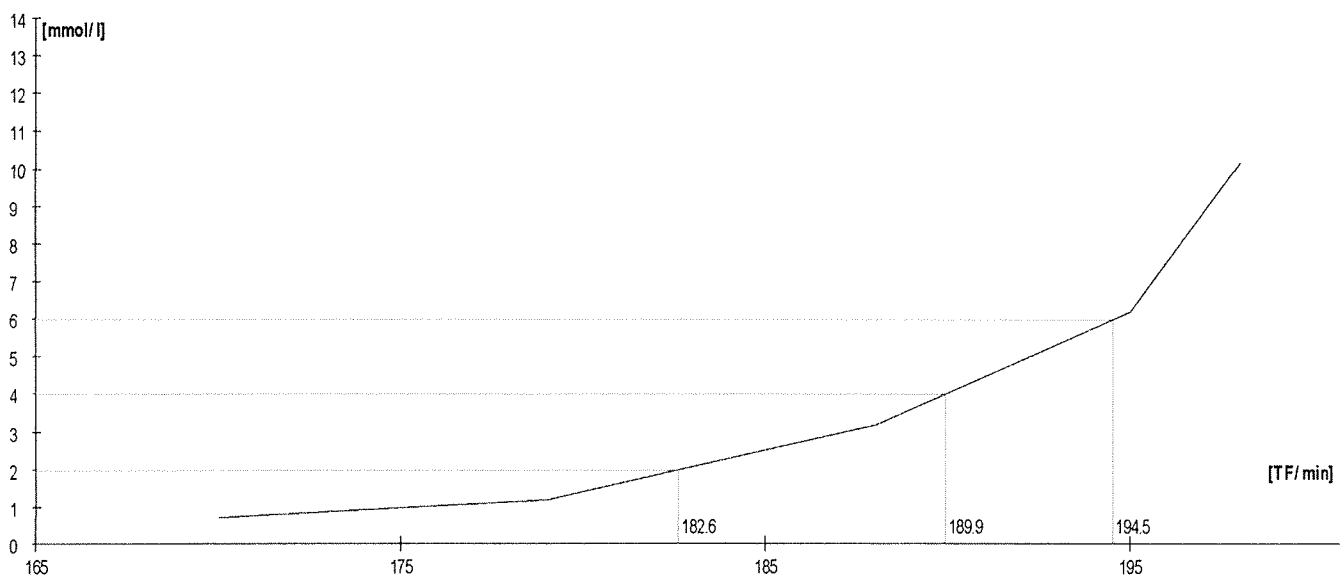
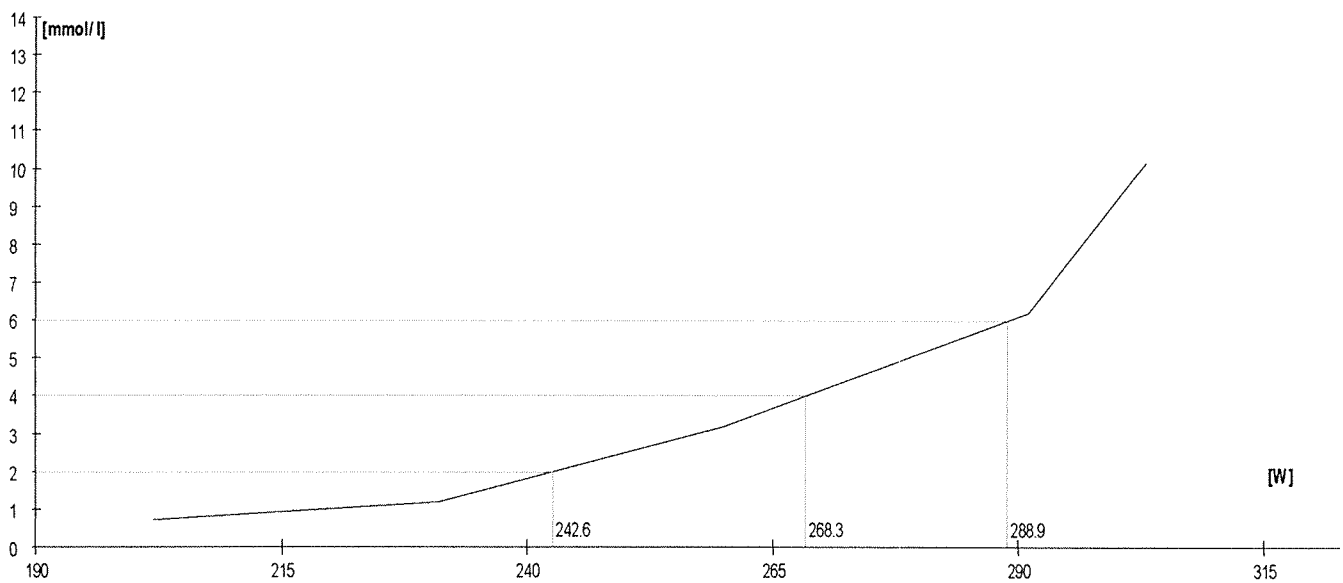
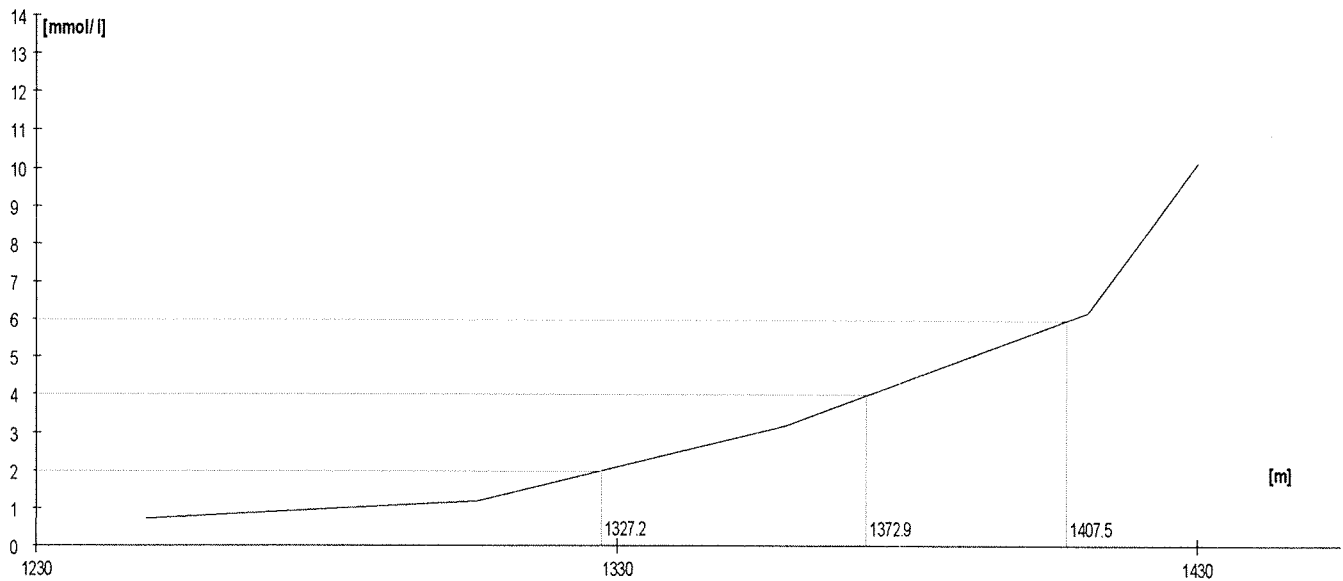
	Rozm. [W]	Výkon [m]	W	TF/min	Lakt.
1.	150	1133	151	135	0,5
2.	180	1203	181	155	1,1
3.	210	1268	211	169	1,8
4.	240	1325	241	181	3,6
5.	max	1439	309	199	9,0

Lakt.	TF/min	W
2.0	170.3	214.3
3.0		
4.0	182.3	246.0
5.0		
6.0	189.0	271.2
7.0		
8.0		



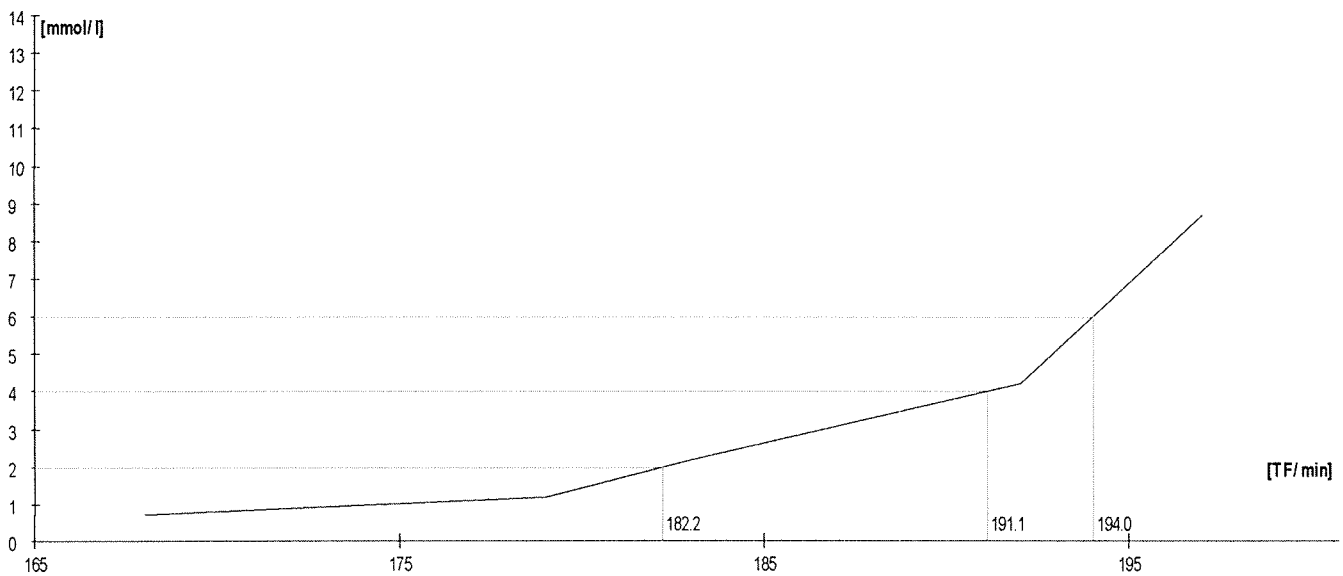
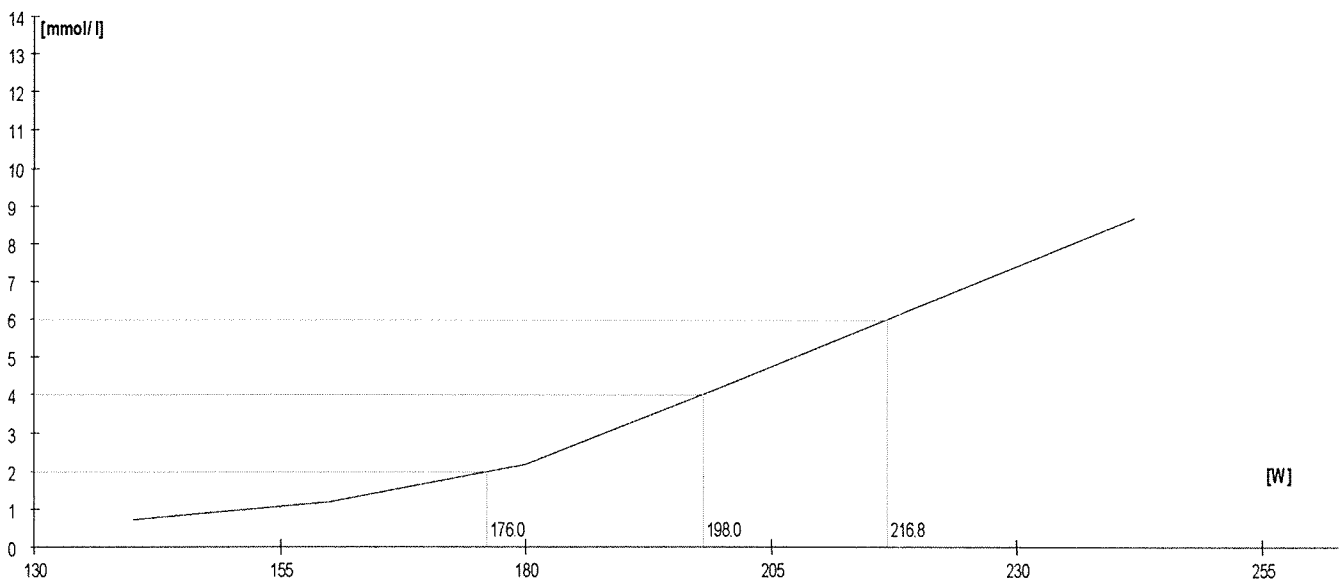
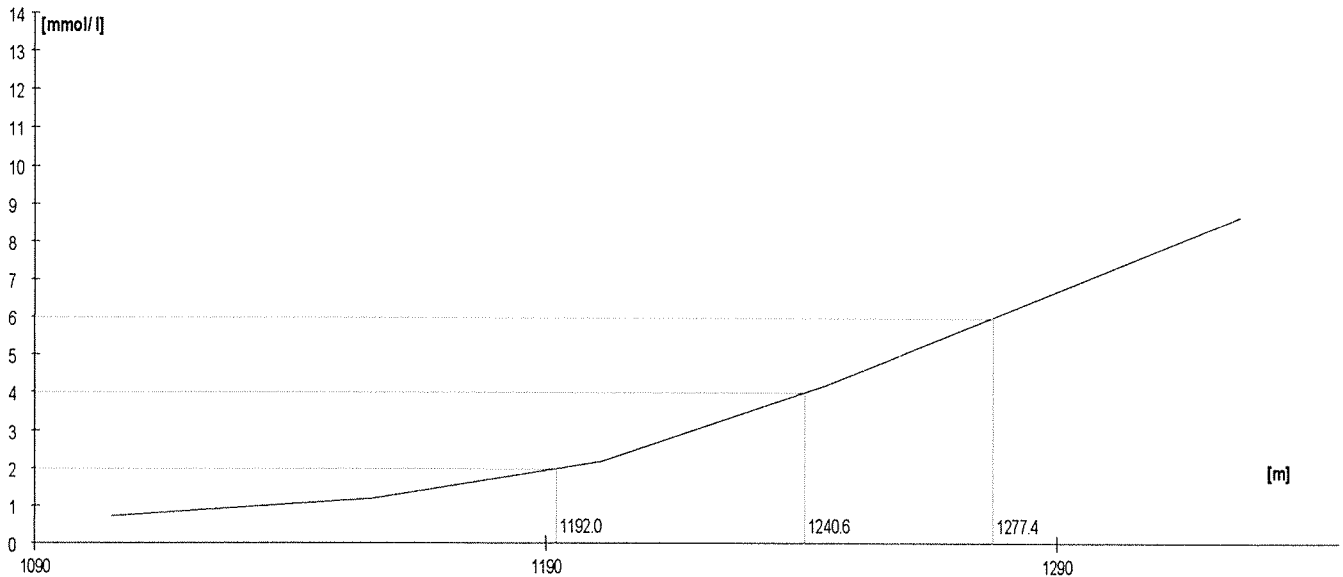
	Rozm. [W]	Výkon [m]	W	TF/min	Lakt.
1.	200	1249	202	170	0,7
2.	230	1306	231	179	1,2
3.	260	1359	260	188	3,2
4.	290	1411	291	195	6,2
5.	max	1430	303	198	10,2

Lakt.	TF/min	W
2.0	182.6	242.6
3.0		
4.0	189.9	268.3
5.0		
6.0	194.5	288.9
7.0		
8.0		



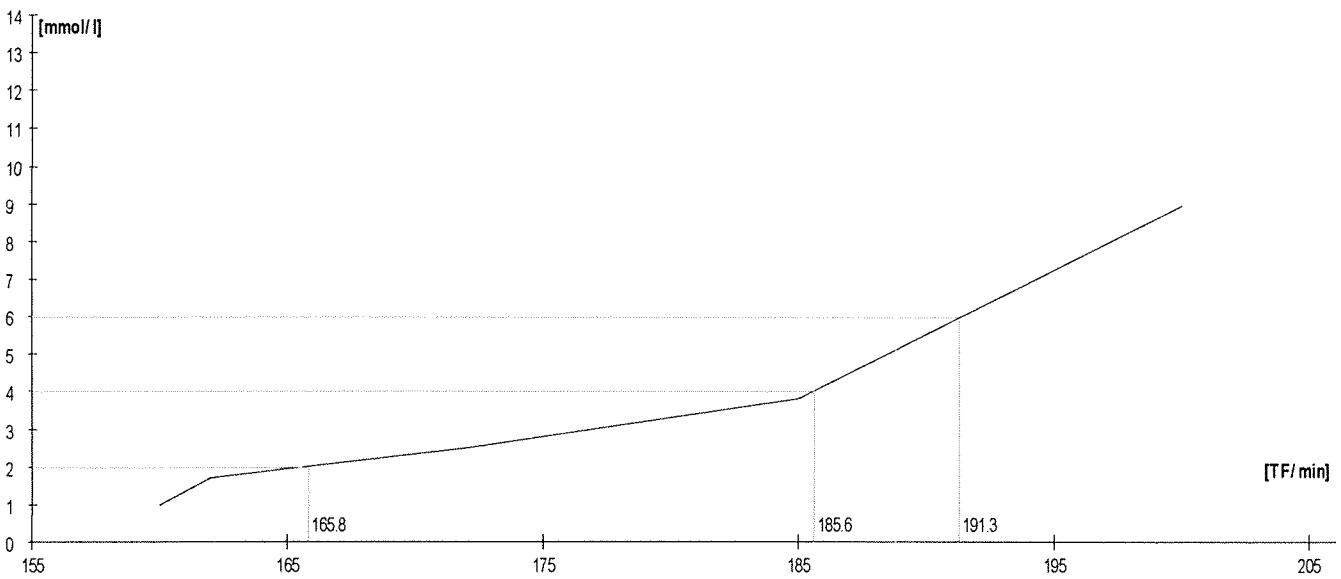
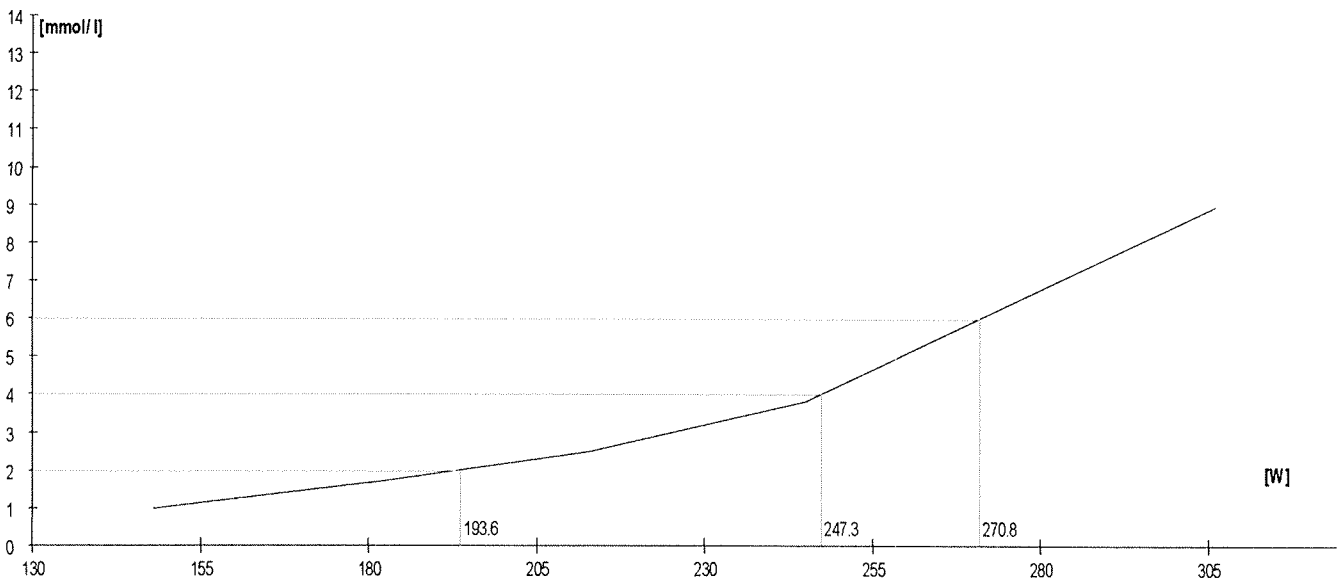
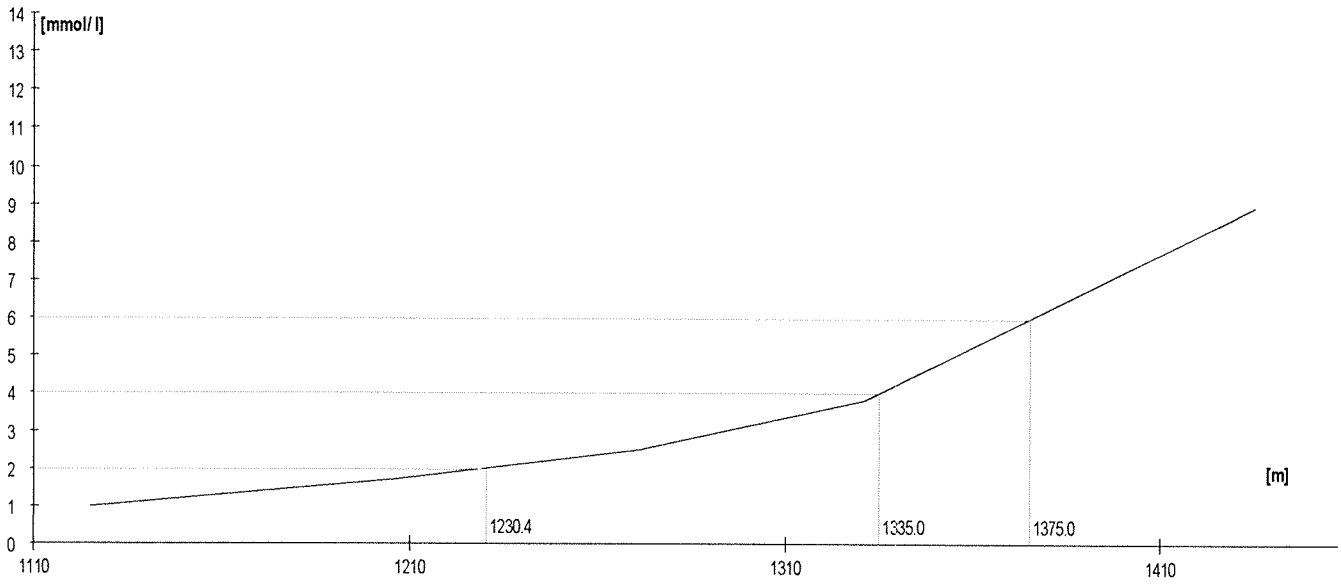
	Rozm. [W]	Výkon [m]	W	TF/min	Lakt.
1.	140	1105	140	168	0,7
2.	160	1156	160	179	1,2
3.	180	1201	180	183	2,2
4.	200	1245	200	192	4,2
5.	max	1326	242	197	8,7

Lakt.	TF/min	W
2.0	182.2	176.0
3.0		
4.0	191.1	198.0
5.0		
6.0	194.0	216.8
7.0		
8.0		



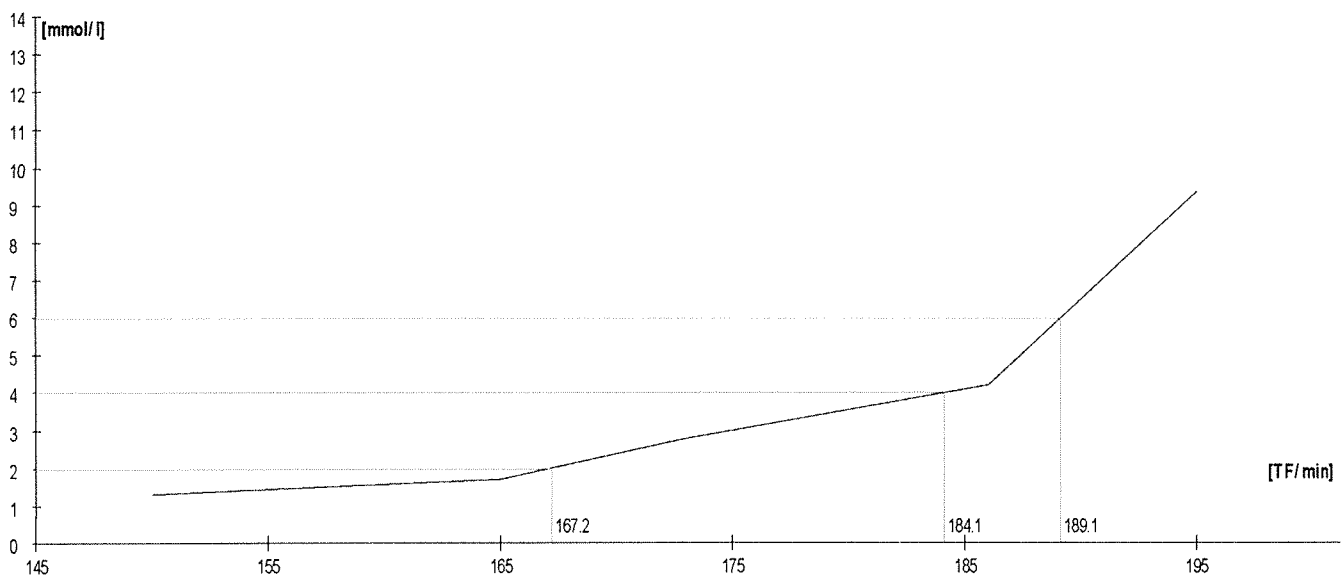
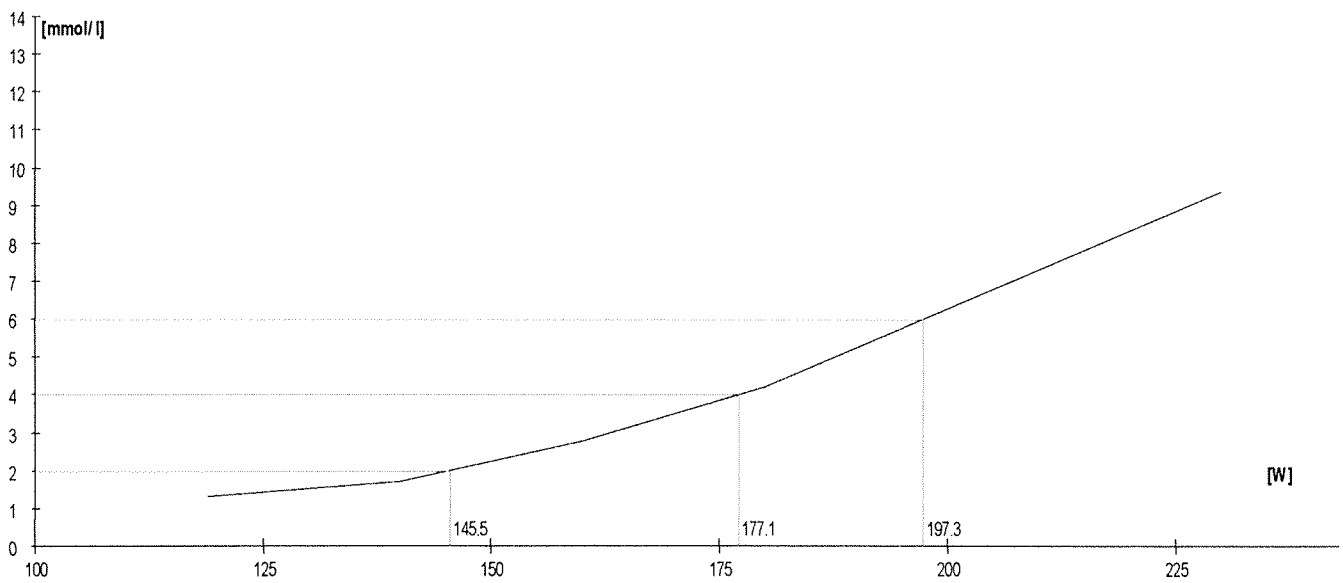
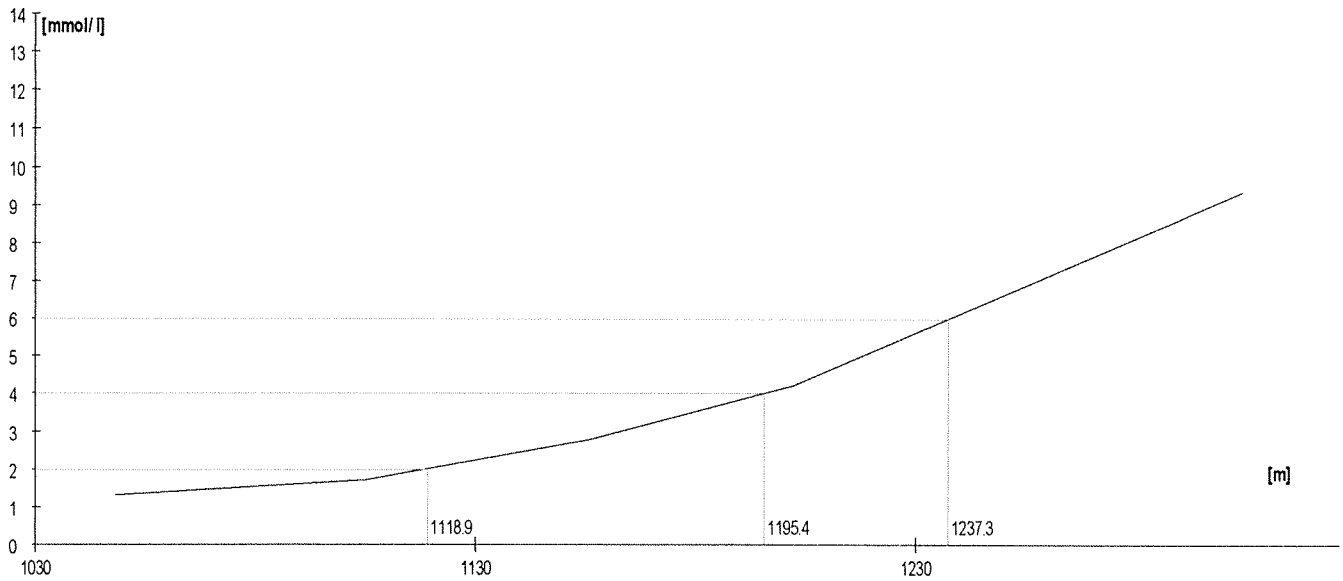
	Rozm.[W]	Výkon [m]	W	TF/min	Lakt.
1.	150	1125	148	160	1,0
2.	180	1206	182	162	1,7
3.	210	1271	213	172	2,5
4.	240	1331	245	185	3,8
5.	max	1435	306	200	9,0

Lakt.	TF/min	W
2.0	165.8	193.6
3.0		
4.0	185.6	247.3
5.0		
6.0	191.3	270.8
7.0		
8.0		



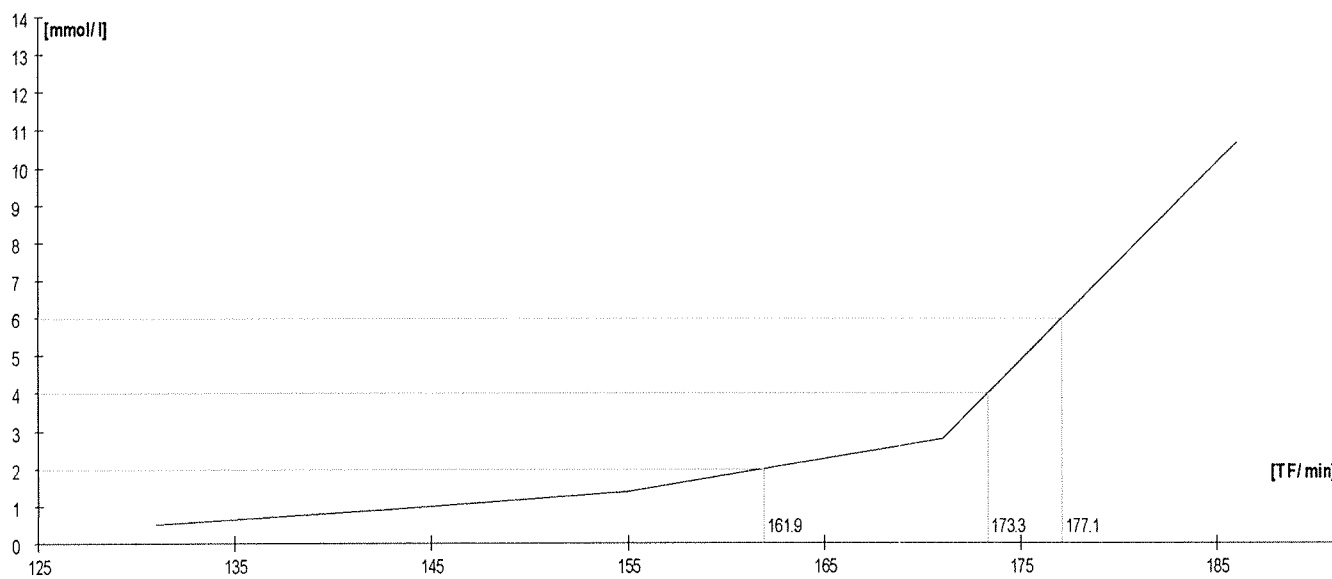
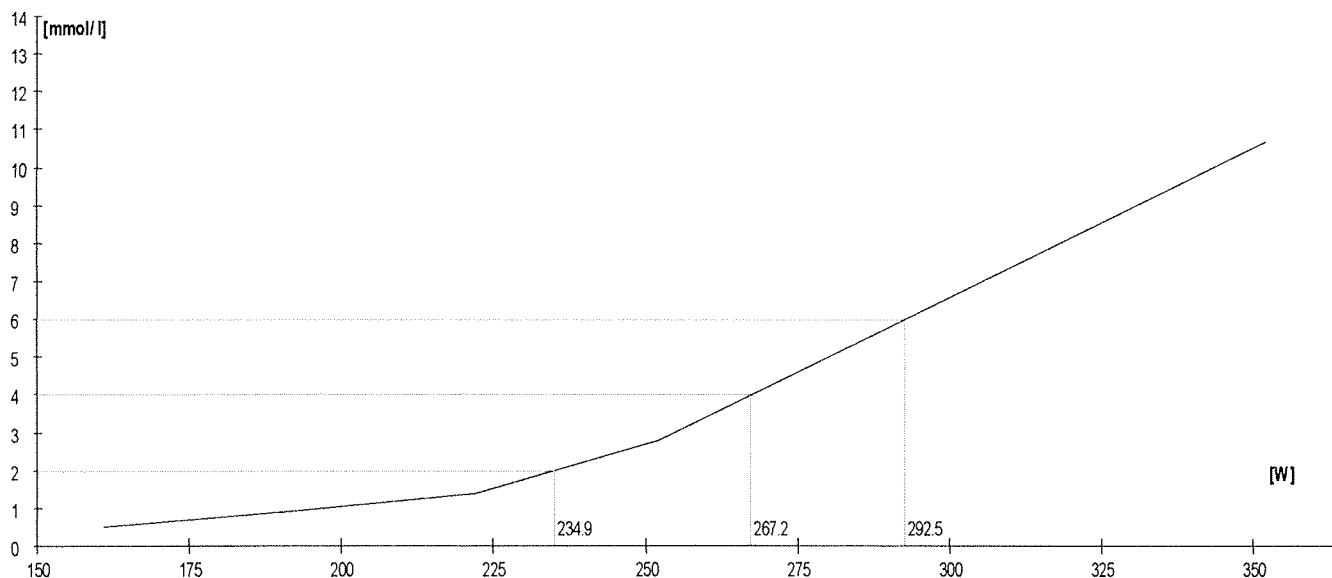
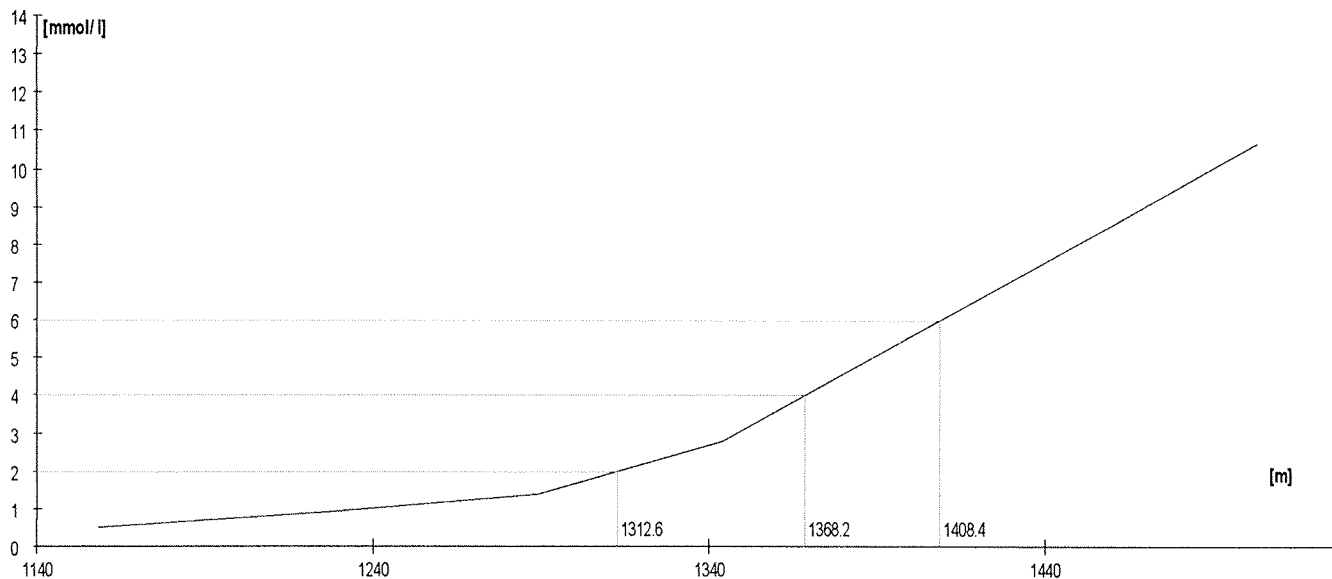
	Rozm.[W]	Výkon [m]	W	TF/min	Lakt.
1.	120	1048	119	150	1.3
2.	140	1105	140	165	1.7
3.	160	1156	160	173	2.8
4.	180	1202	180	186	4.2
5.	max	1304	230	195	9.4

Lakt.	TF/min	W
2.0	167.2	146.5
3.0		
4.0	184.1	177.1
5.0		
6.0	189.1	197.3
7.0		
8.0		



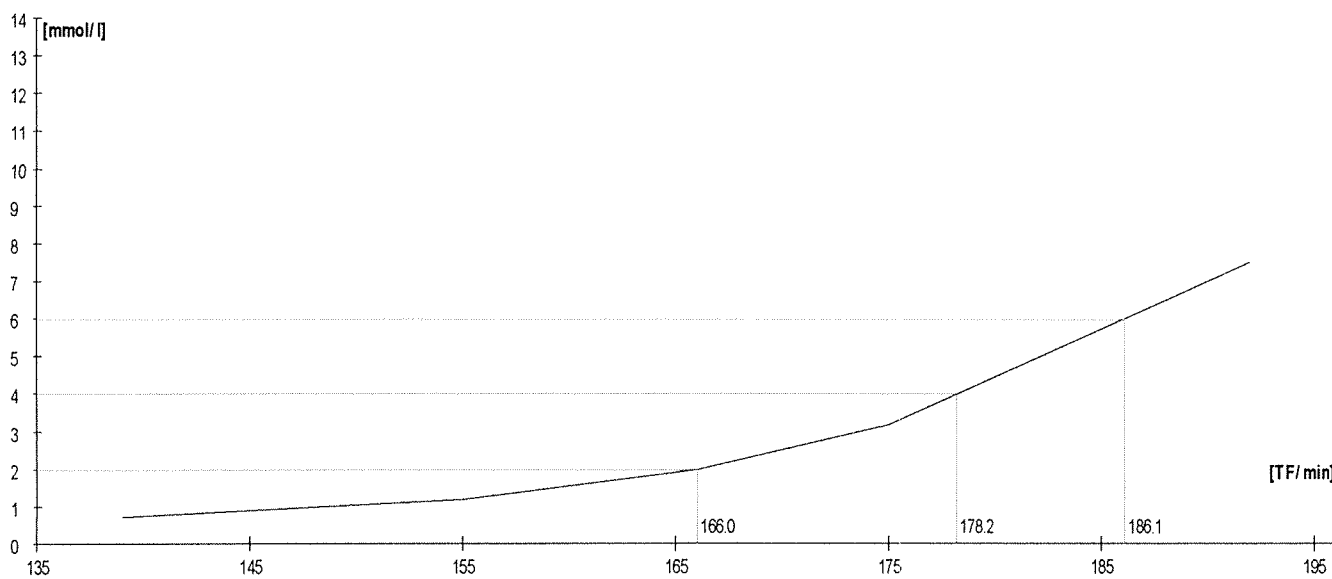
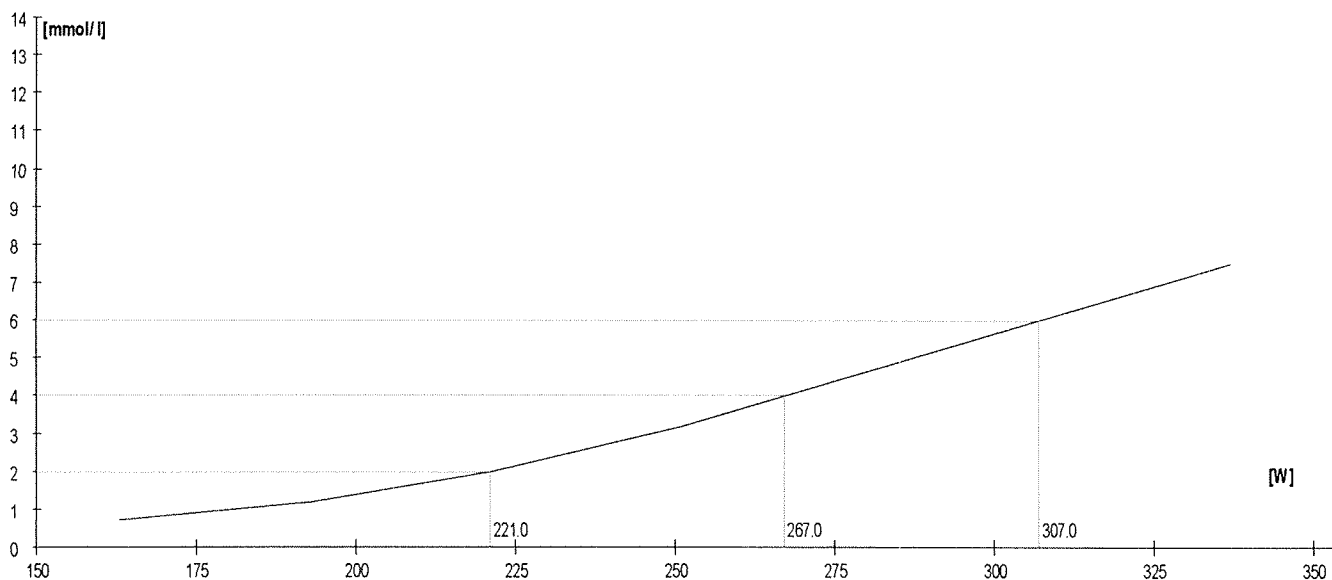
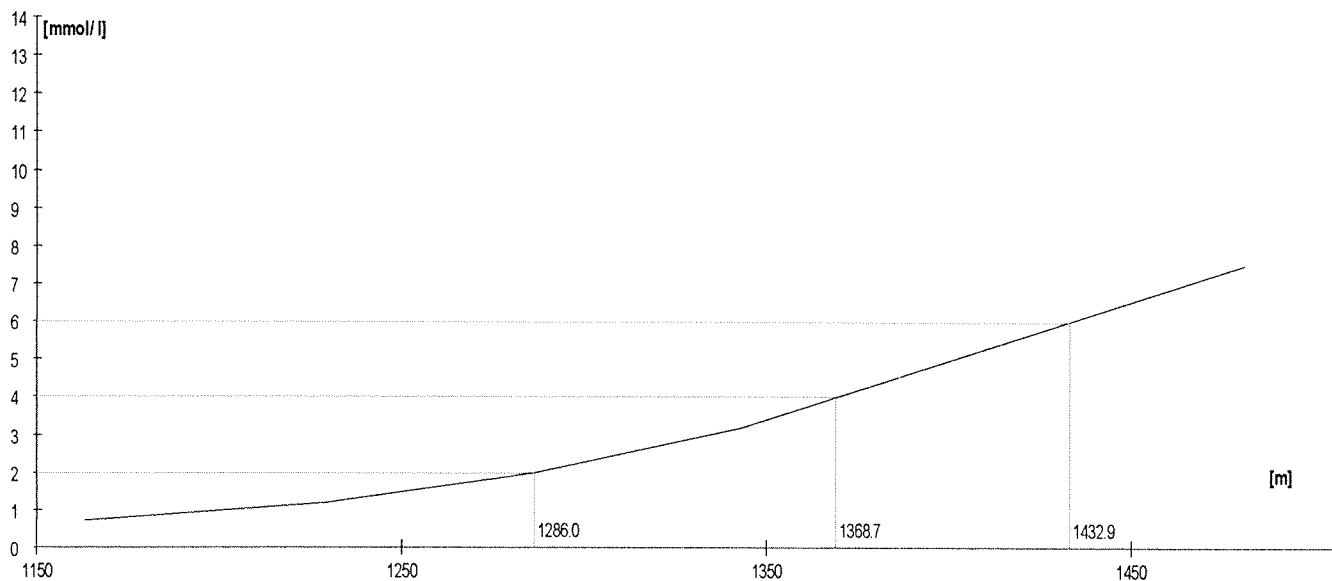
	Rozm.[W]	Výkon [m]	W	TF/min	Lakt.
1.	160	1158	161	131	0,5
2.	190	1227	192	143	0,9
3.	220	1289	222	155	1,4
4.	250	1344	252	171	2,8
5.	max	1503	352	186	10,7

Lakt.	TF/min	W
2.0	161.9	234.9
3.0		
4.0	173.3	267.2
5.0		
6.0	177.1	292.5
7.0		
8.0		



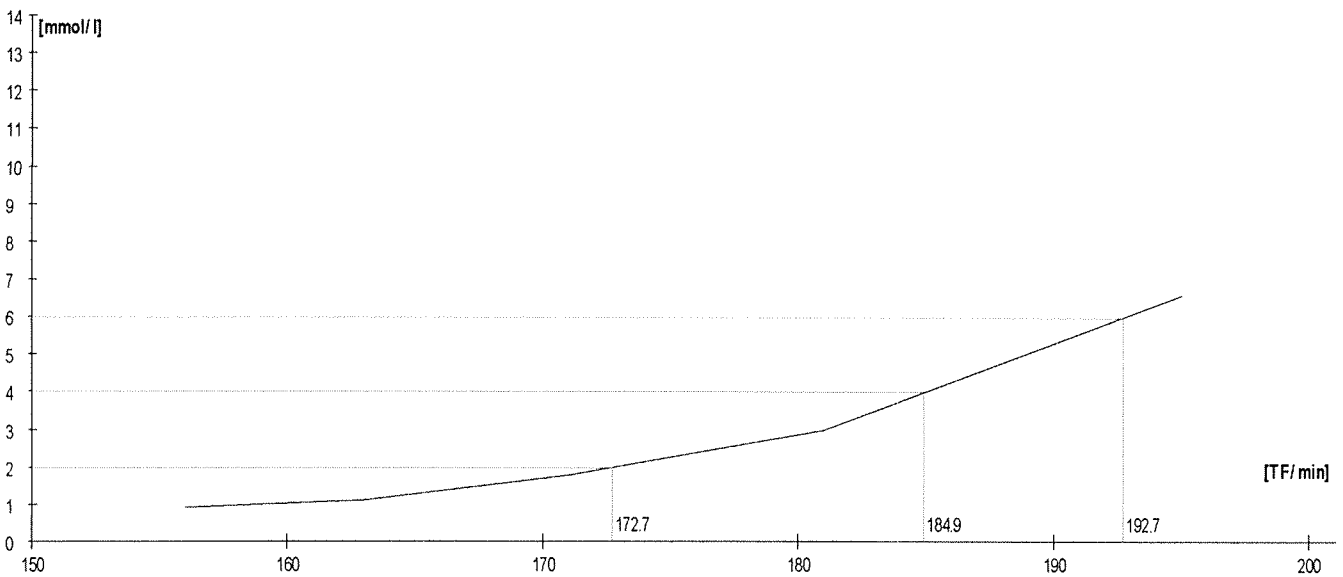
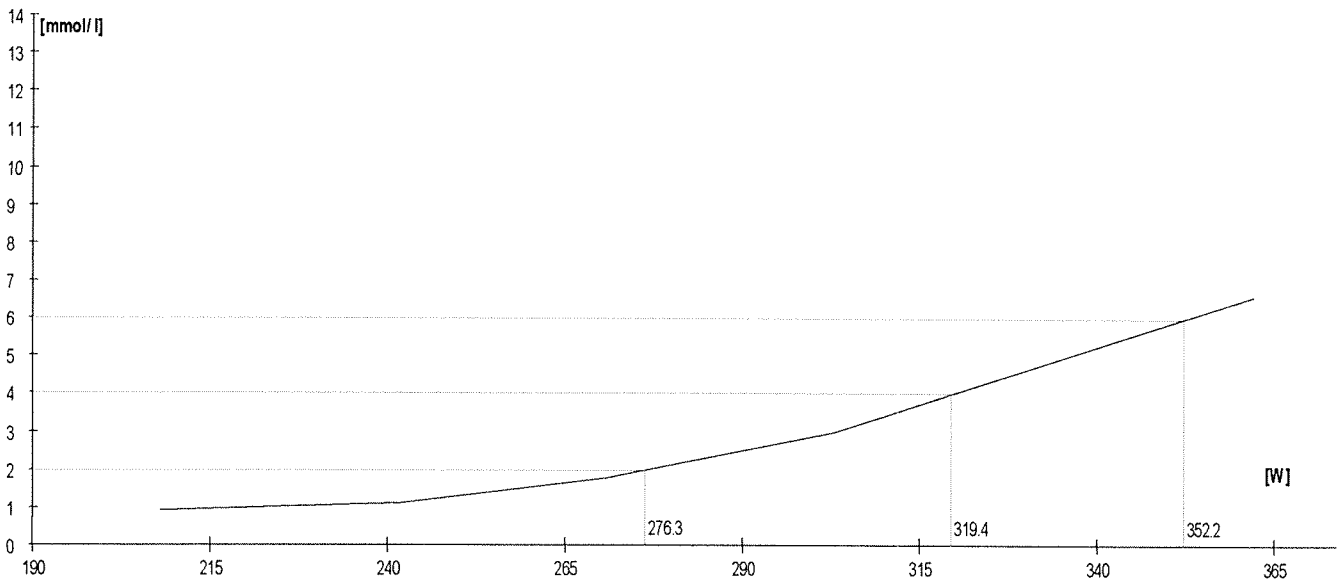
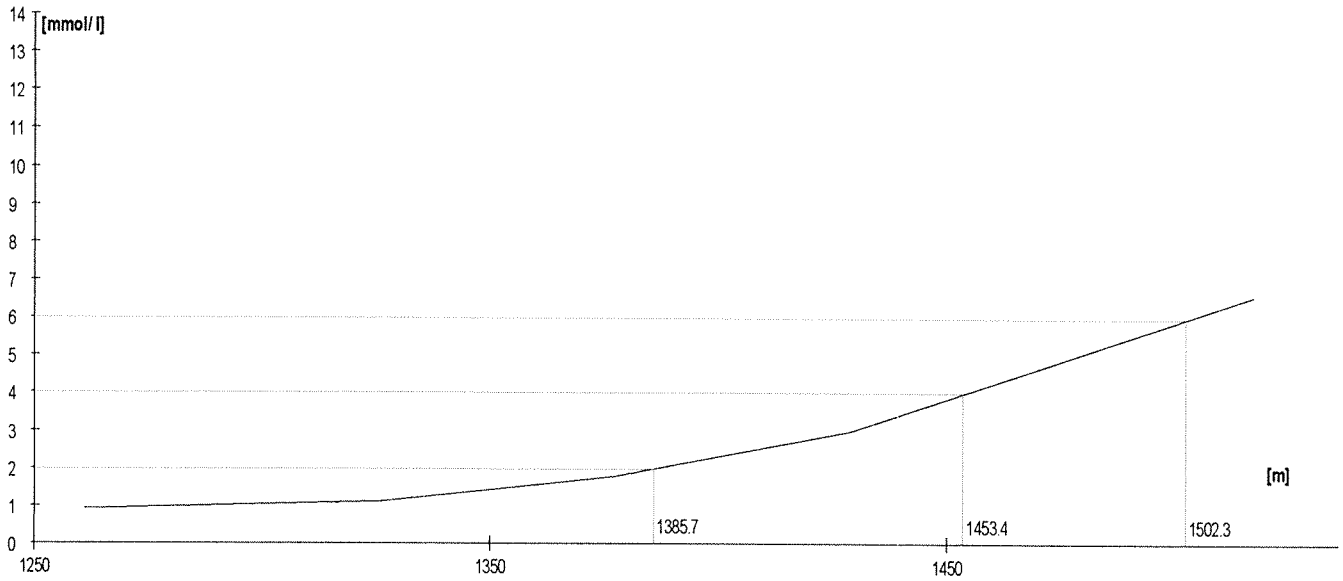
	Rozm. [W]	Výkon [m]	W	TF/min	Lakt.
1.	160	1163	163	139	0,7
2.	190	1229	193	155	1,2
3.	220	1286	221	166	2,0
4.	250	1343	251	175	3,2
5.	max	1481	337	192	7,5

Lakt.	TF/min	W
2.0	166.0	221.0
3.0		
4.0	178.2	267.0
5.0		
6.0	186.1	307.0
7.0		
8.0		



	Rozm. [W]	Vykon [m]	W	TF/min	Lakt.
1.	210	1261	208	156	0,9
2.	240	1326	242	163	1,1
3.	270	1377	271	171	1,8
4.	300	1429	303	181	3,0
5.	max	1517	362	195	6,6

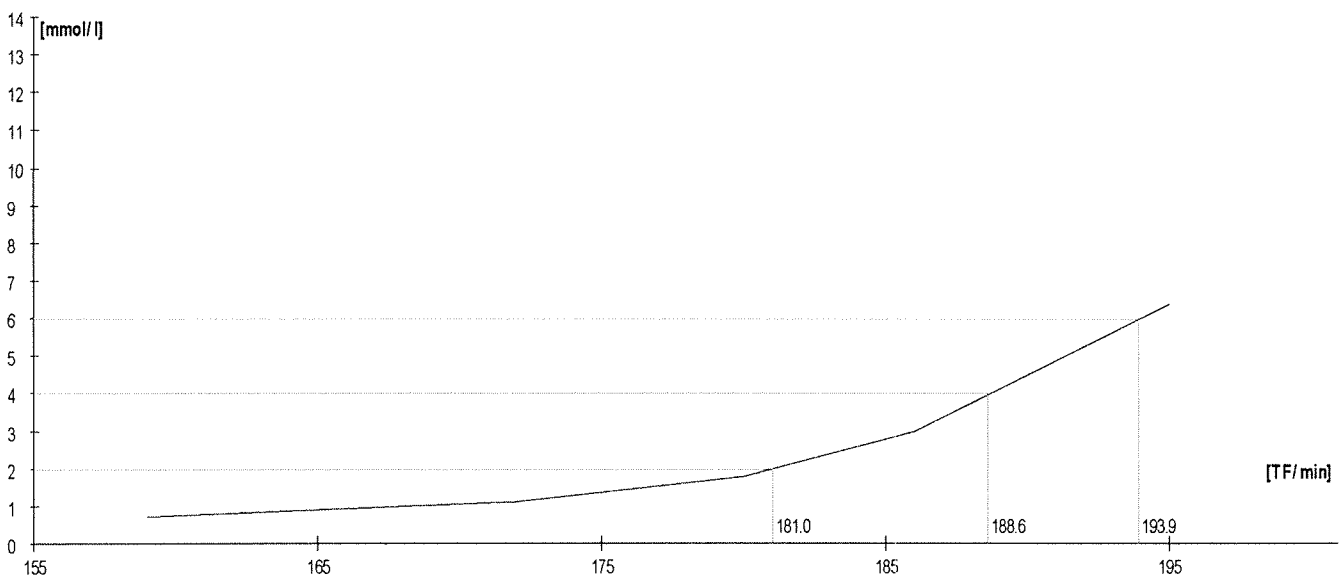
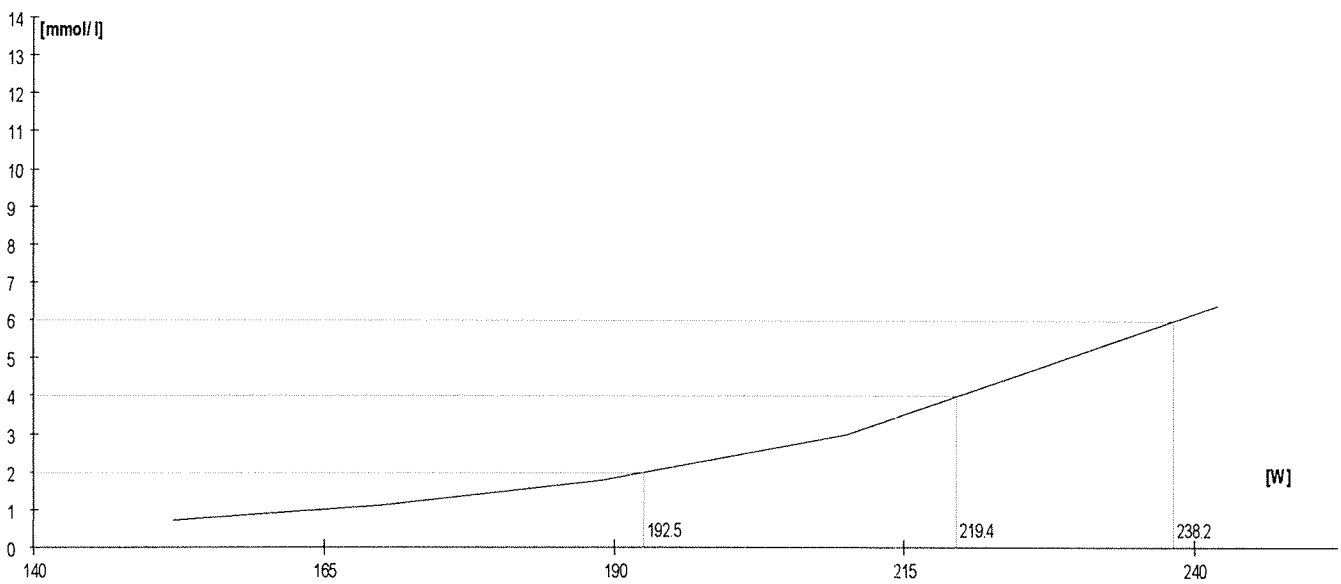
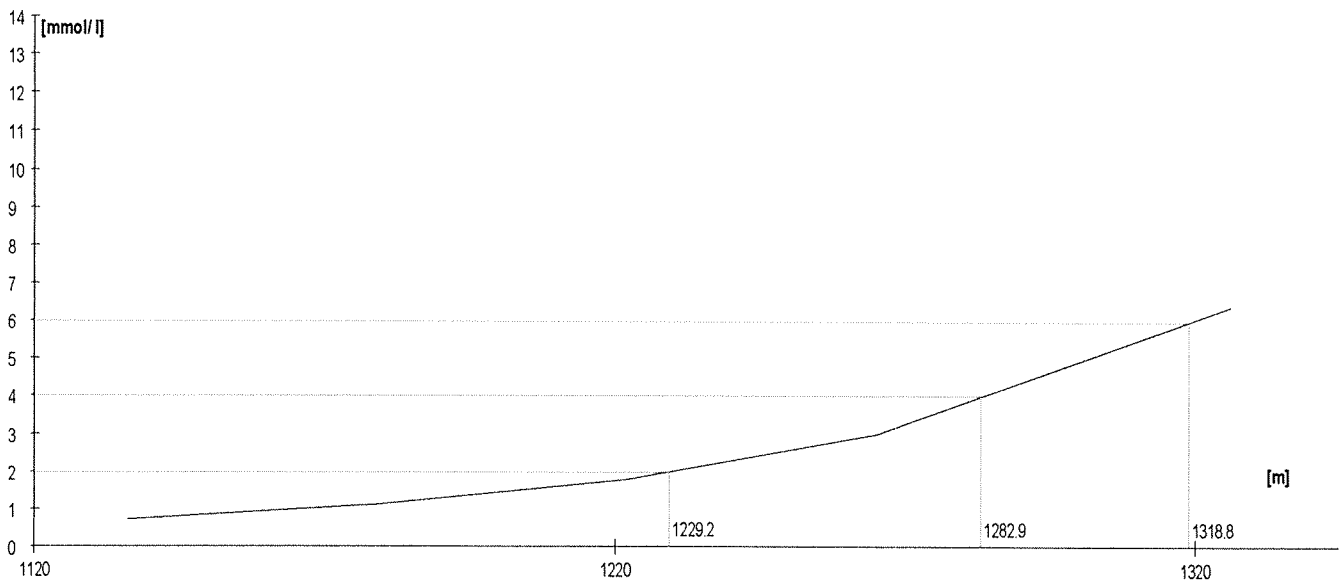
Lakt.	TF/min	W
2.0	172.7	276.3
3.0		
4.0	184.9	319.4
5.0		
6.0	192.7	352.2
7.0		
8.0		





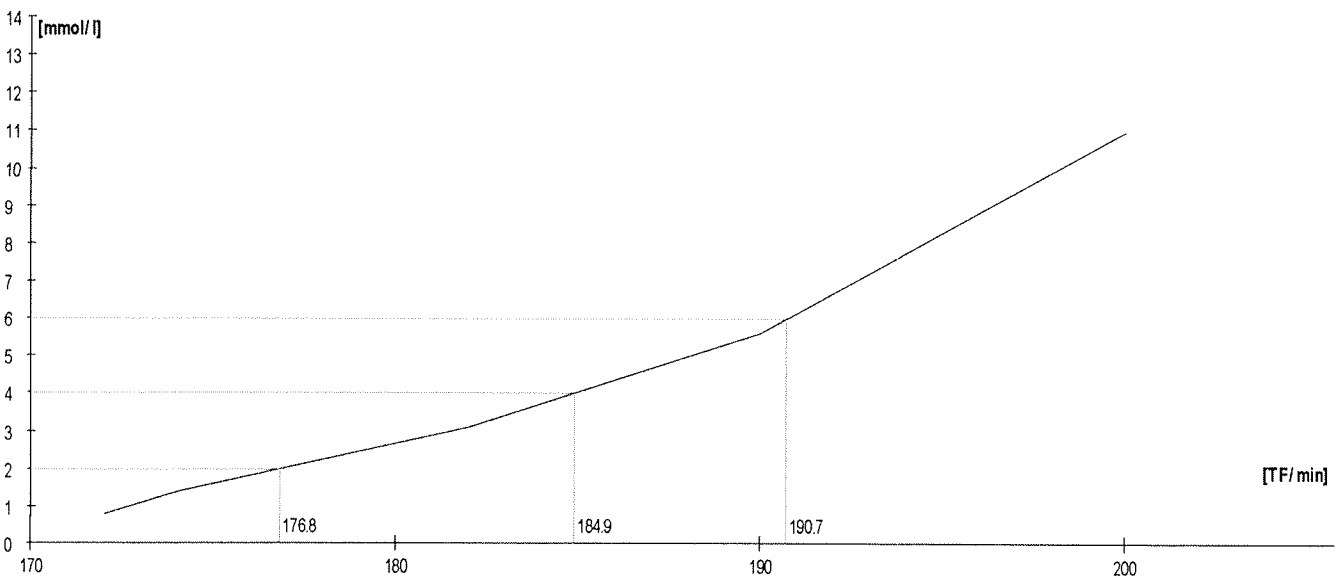
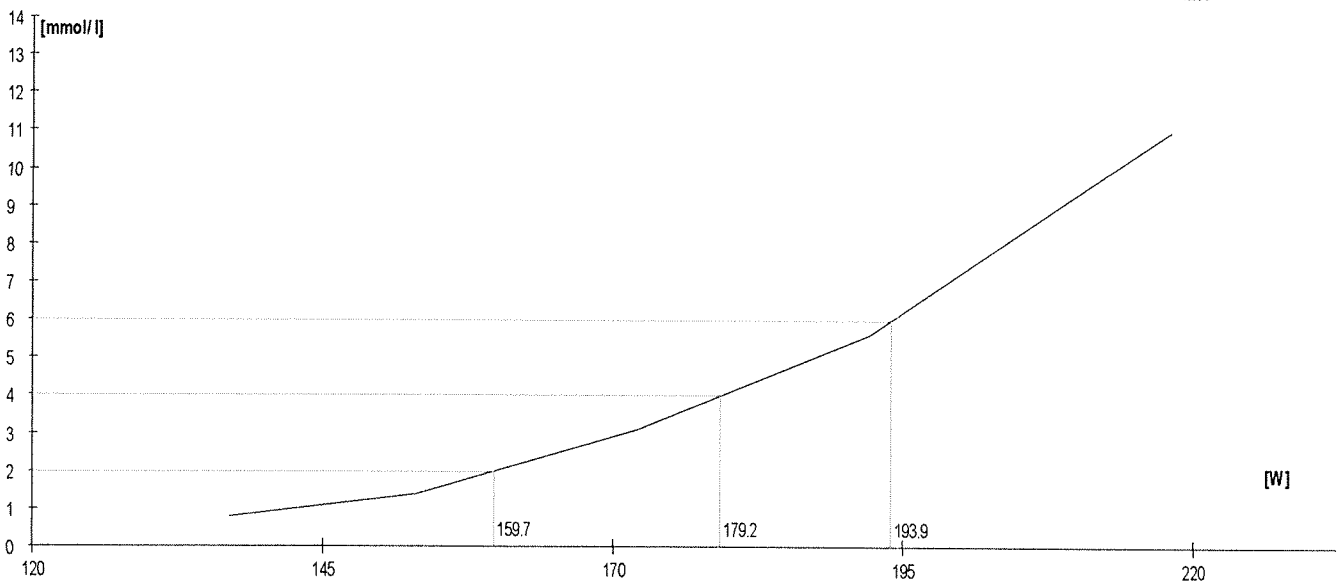
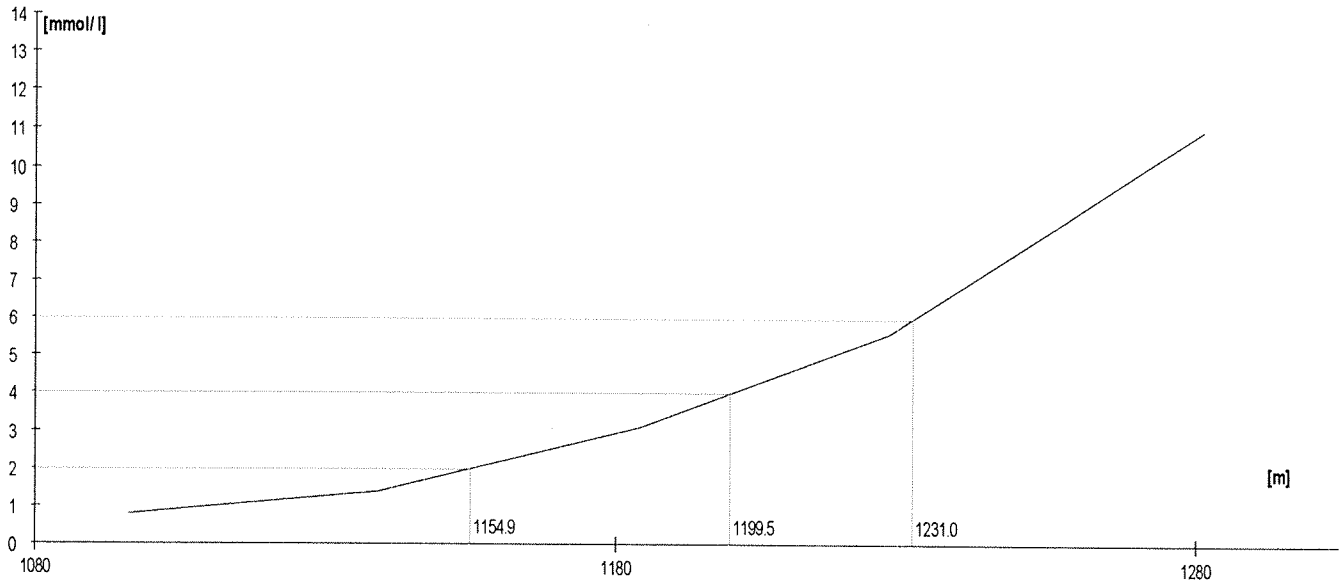
	Rozm. [W]	Výkon [m]	W	TF/min	Lakt.
1.	150	1136	152	159	0,7
2.	170	1179	170	172	1,1
3.	190	1222	189	180	1,8
4.	210	1265	210	186	3,0
5.	max	1326	242	195	6,4

Lakt.	TF/min	W
2.0	181.0	192.5
3.0		
4.0	188.6	219.4
5.0		
6.0	193.9	238.2
7.0		
8.0		



	Rozm.[W]	Výkon [m]	W	TF/min	Lakt.
1.	130	1096	137	172	0,8
2.	150	1139	153	174	1,4
3.	170	1184	172	182	3,1
4.	190	1227	192	190	5,6
5.	max	1281	218	200	11,0

Lakt.	TF/min	W
2.0	176.8	159.7
3.0		
4.0	184.9	179.2
5.0		
6.0	190.7	193.9
7.0		
8.0		



	Rozm. [W]	Výkon [m]	W	TF/min	Lakt.
1.	170	1182	171	162	1,1
2.	19*0	1224	190	171	1,3
3.	210	1263	209	177	1,8
4.	230	1305	230	187	3,2
5.	max	1439	309	200	11,6

Lakt.	TF/min	W
2.0	178.4	212.0
3.0		
4.0	188.2	237.5
5.0		
6.0	191.3	256.3
7.0		
8.0		

